



[Go to Product page](#)

Datasheet for ABIN6737896
anti-GLIS3 antibody (C-Term)

1 Image

Overview

Quantity:	100 µL
Target:	GLIS3
Binding Specificity:	C-Term
Reactivity:	Human, Dog, Rabbit, Cow
Host:	Rabbit
Clonality:	Polyclonal
Conjugate:	This GLIS3 antibody is un-conjugated
Application:	Western Blotting (WB)

Product Details

Immunogen:	Synthetic peptide from C-Terminus of human GLIS3 (Q8NEA6). Percent identity by BLAST analysis: Human, Gibbon (100%), Marmoset, Mouse, Horse (92%), Galago, Dog, Bovine, Rabbit, Pig, Guinea pig (85%). Type of Immunogen: Synthetic peptide
Isotype:	IgG
Specificity:	Human GLIS3
Predicted Reactivity:	Percent identity by BLAST analysis: Human (100%) Mouse, Horse (92%) Dog, Bovine, Rabbit (85%).
Purification:	Immunoaffinity purified

Target Details

Target:	GLIS3
Alternative Name:	GLIS3 (GLIS3 Products)
Background:	Name/Gene ID: GLIS3 Family: Zinc Finger Synonyms: GLIS3, GLIS family zinc finger 3, OK/KNS-cl.4, Zinc finger protein 515, Zinc finger protein GLIS3, GLI-similar 3, ZNF515
Gene ID:	169792
UniProt:	Q8NEA6

Application Details

Application Notes:	Approved: WB Usage: ELISA titer using peptide based assay: 1:62500. Western Blot: Suggested dilution at 0.25 µg/mL in 5 % skim milk / PBS buffer, and HRP conjugated anti-Rabbit IgG should be diluted in 1:50000 - 100000 as second antibody.
Comment:	Target Species of Antibody: Human
Restrictions:	For Research Use only

Handling

Format:	Lyophilized
Reconstitution:	Distilled Water.
Concentration:	Lot specific
Buffer:	Lyophilized from PBS with 2 % sucrose
Handling Advice:	Avoid repeat freeze-thaw cycles.
Storage:	4 °C,-20 °C
Storage Comment:	Long term: -20°C, the use of 50% glycerol is recommended if storing aliquots in -20°C for long term use (up to 1 year) Short term (less than 1 week): 4°C. Avoid freeze-thaw cycles.

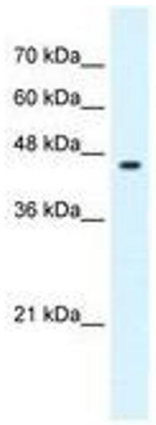


Image 1.