

Datasheet for ABIN6737904
anti-RBMY1A1 antibody (AA 141-190)[Go to Product page](#)

1 Image

Overview

Quantity:	100 µL
Target:	RBMY1A1
Binding Specificity:	AA 141-190
Reactivity:	Human
Host:	Rabbit
Clonality:	Polyclonal
Conjugate:	This RBMY1A1 antibody is un-conjugated
Application:	Western Blotting (WB)

Product Details

Immunogen:	Synthetic peptide located between aa141-190 of human RBMY1A1. Percent identity by BLAST analysis: Human (100%), Monkey (92%), Chimpanzee, Galago, Marmoset, Mouse, Rat, Hamster, Elephant, Panda, Dog, Bovine, Rabbit, Horse, Pig, Opossum, Guinea pig, Turkey, Zebra finch, Chicken, Platypus, Xenopus (85%). Type of Immunogen: Synthetic peptide
Isotype:	IgG
Specificity:	Human RBMY1A1
Predicted Reactivity:	Percent identity by BLAST analysis: Human (100%).
Purification:	Immunoaffinity purified

Target Details

Target:	RBM1A1
Alternative Name:	RBM1A1 (RBM1A1 Products)
Background:	Name/Gene ID: RBM1A1 Synonyms: RBM1A1, HRBM1, RBM, RBM1, RBM1, RNA binding protein, RNA-binding motif protein 2, RNA-binding motif protein 1, YRRM1, RBM2, YRRM2
Gene ID:	5940
UniProt:	Q15414

Application Details

Application Notes:	Approved: WB Usage: ELISA titer using peptide based assay: 1:62500. Western Blot: Suggested dilution at 0.5 µg/mL in 5 % skim milk / PBS buffer, and HRP conjugated anti-Rabbit IgG should be diluted in 1:50000 - 100000 as second antibody.
Comment:	Target Species of Antibody: Human
Restrictions:	For Research Use only

Handling

Format:	Lyophilized
Reconstitution:	Distilled Water.
Concentration:	Lot specific
Buffer:	Lyophilized from PBS with 2 % sucrose
Handling Advice:	Avoid repeat freeze-thaw cycles.
Storage:	4 °C, -20 °C
Storage Comment:	Long term: -20°C, the use of 50% glycerol is recommended if storing aliquots in -20°C for long term use (up to 1 year) Short term (less than 1 week): 4°C. Avoid freeze-thaw cycles.

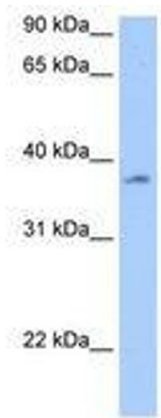


Image 1.