



Datasheet for ABIN6737909  
**anti-RBM9 antibody (AA 64-113)**



[Go to Product page](#)

1 Image

Overview

Quantity:	100 µL
Target:	RBM9
Binding Specificity:	AA 64-113
Reactivity:	Human, Mouse, Rat, Cow, Dog, Horse, Rabbit, Guinea Pig, Pig, Monkey, Hamster, Chicken
Host:	Rabbit
Clonality:	Polyclonal
Conjugate:	This RBM9 antibody is un-conjugated
Application:	Western Blotting (WB)

Product Details

Immunogen:	Synthetic peptide located between aa64-113 of human RBFOX2 (O43251, NP_001026865). Percent identity by BLAST analysis: Human, Chimpanzee, Gorilla, Gibbon, Monkey, Galago, Marmoset, Mouse, Rat, Hamster, Elephant, Dog, Bovine, Rabbit, Horse, Pig, Opossum, Guinea pig, Zebra finch, Chicken, Platypus (100%), Bat, Turkey, Lizard (92%), Xenopus (85%).  Type of Immunogen: Synthetic peptide
Isotype:	IgG
Specificity:	Human RBFOX2 / RBM9
Predicted Reactivity:	Percent identity by BLAST analysis: Human, Rat (100%).
Purification:	Immunoaffinity purified

## Target Details

---

Target:	RBM9
Alternative Name:	RBFOX2 / RBM9 ( <a href="#">RBM9 Products</a> )
Background:	Name/Gene ID: RBFOX2  Synonyms: RBFOX2, DJ106I20.3, Fox-2, Fxh, Fox-1 homolog B, HRNBP2, Fox-1 homologue, HRNBP2, RNA-binding motif protein 9, RNA-binding protein 9, RBM9, FOX2, RNA binding motif protein 9, RTA
Gene ID:	23543
NCBI Accession:	<a href="#">NP_001026865</a>
UniProt:	<a href="#">O43251</a>
Pathways:	<a href="#">Intracellular Steroid Hormone Receptor Signaling Pathway</a> , <a href="#">Skeletal Muscle Fiber Development</a>

## Application Details

---

Application Notes:	Approved: WB  Usage: ELISA titer using peptide based assay: 1:312500. Western Blot: Suggested dilution at 0.5 µg/mL in 5 % skim milk / PBS buffer, and HRP conjugated anti-Rabbit IgG should be diluted in 1:50000 - 100000 as second antibody.
Comment:	Target Species of Antibody: Human
Restrictions:	For Research Use only

## Handling

---

Format:	Lyophilized
Reconstitution:	Distilled Water.
Concentration:	Lot specific
Buffer:	Lyophilized from PBS with 2 % sucrose
Handling Advice:	Avoid repeat freeze-thaw cycles.
Storage:	4 °C,-20 °C
Storage Comment:	Long term: -20°C, the use of 50% glycerol is recommended if storing aliquots in -20°C for long term use (up to 1 year)

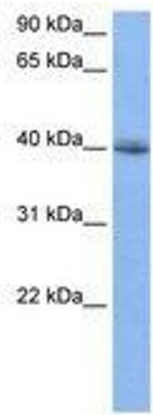
## Handling

---

Short term (less than 1 week): 4°C. Avoid freeze-thaw cycles.

## Images

---



**Image 1.**