



[Go to Product page](#)

Datasheet for ABIN6737917
anti-PIGF antibody (N-Term)

1 Image

Overview

Quantity:	100 µL
Target:	PIGF
Binding Specificity:	N-Term
Reactivity:	Human, Mouse, Cow
Host:	Rabbit
Clonality:	Polyclonal
Conjugate:	This PIGF antibody is un-conjugated
Application:	Western Blotting (WB)

Product Details

Immunogen:	Synthetic peptide from N-Terminus of human PIGF (Q07326, NP_002634). Percent identity by BLAST analysis: Human, Chimpanzee, Gorilla (100%), Gibbon, Marmoset, Rat, Dog (92%), Horse (91%), Mouse, Panda, Bovine, Bat, Pig (85%). Type of Immunogen: Synthetic peptide
Isotype:	IgG
Specificity:	Human PIGF
Predicted Reactivity:	Percent identity by BLAST analysis: Human (100%) Dog (92%) Mouse, Bovine (85%).
Purification:	Immunoaffinity purified

Target Details

Target:	PIGF
Alternative Name:	PIGF (PIGF Products)
Background:	Name/Gene ID: PIGF Synonyms: PIGF, GPI11 homolog, PIG-F, PIGFP1
Gene ID:	5281
NCBI Accession:	NP_002634
UniProt:	Q07326
Pathways:	Inositol Metabolic Process

Application Details

Application Notes:	Approved: WB Usage: ELISA titer using peptide based assay: 1:12500. Western Blot: Suggested dilution at 1 μ g/mL in 5 % skim milk / PBS buffer, and HRP conjugated anti-Rabbit IgG should be diluted in 1:50000 - 100000 as second antibody. Not recommended for: IHC-P
Comment:	Target Species of Antibody: Human
Restrictions:	For Research Use only

Handling

Format:	Lyophilized
Reconstitution:	Distilled Water.
Concentration:	Lot specific
Buffer:	Lyophilized from PBS with 2 % sucrose
Handling Advice:	Avoid repeat freeze-thaw cycles.
Storage:	4 °C,-20 °C
Storage Comment:	Long term: -20°C, the use of 50% glycerol is recommended if storing aliquots in -20°C for long term use (up to 1 year)

Handling

Short term (less than 1 week): 4°C. Avoid freeze-thaw cycles.

Images

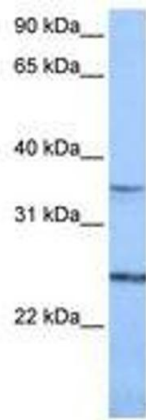


Image 1.