

Datasheet for ABIN6737918
anti-PPP1R10 antibody (AA 146-195)[Go to Product page](#)

1 Image

Overview

Quantity:	100 µL
Target:	PPP1R10
Binding Specificity:	AA 146-195
Reactivity:	Human, Rat, Mouse, Cow, Dog, Guinea Pig, Pig, Monkey
Host:	Rabbit
Clonality:	Polyclonal
Conjugate:	This PPP1R10 antibody is un-conjugated
Application:	Western Blotting (WB)

Product Details

Immunogen:	Synthetic peptide located between aa146-195 of human PPP1R10 (Q96QC0, NP_002705). Percent identity by BLAST analysis: Human, Chimpanzee, Gorilla, Gibbon, Monkey, Marmoset, Mouse, Rat, Panda, Dog, Bovine, Pig (100%), Galago, Elephant, Bat, Rabbit, Horse, Opossum (92%), Platypus (84%). Type of Immunogen: Synthetic peptide
Isotype:	IgG
Specificity:	Human PPP1R10
Predicted Reactivity:	Percent identity by BLAST analysis: Human, Mouse, Rat, Dog, Bovine, Pig (100%) Rabbit, Horse (92%).
Purification:	Immunoaffinity purified

Target Details

Target:	PPP1R10
Alternative Name:	PPP1R10 / PNUTS (PPP1R10 Products)
Background:	Name/Gene ID: PPP1R10 Synonyms: PPP1R10, CAT53, FB19, HLA-C associated transcript 53, p99, PNUTS, PP1-binding protein of 114 kDa, PP1R10, R111, Protein FB19
Gene ID:	5514
NCBI Accession:	NP_002705
UniProt:	Q96QC0
Pathways:	Protein targeting to Nucleus

Application Details

Application Notes:	Approved: WB Usage: ELISA titer using peptide based assay: 1:312500. Western Blot: Suggested dilution at 1 µg/mL in 5 % skim milk / PBS buffer, and HRP conjugated anti-Rabbit IgG should be diluted in 1:50000 - 100000 as second antibody.
Comment:	Target Species of Antibody: Human
Restrictions:	For Research Use only

Handling

Format:	Lyophilized
Reconstitution:	Distilled Water.
Concentration:	Lot specific
Buffer:	Lyophilized from PBS with 2 % sucrose
Handling Advice:	Avoid repeat freeze-thaw cycles.
Storage:	4 °C, -20 °C
Storage Comment:	Long term: -20°C, the use of 50% glycerol is recommended if storing aliquots in -20°C for long term use (up to 1 year) Short term (less than 1 week): 4°C. Avoid freeze-thaw cycles.

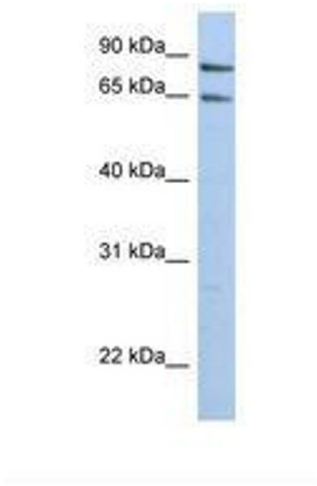


Image 1.