

Datasheet for ABIN6737921
anti-RPN1 antibody (AA 63-112)



[Go to Product page](#)

1 Image

Overview

Quantity:	100 µL
Target:	RPN1
Binding Specificity:	AA 63-112
Reactivity:	Human, Dog, Cow, Horse, Rabbit, Pig
Host:	Rabbit
Clonality:	Polyclonal
Conjugate:	This RPN1 antibody is un-conjugated
Application:	Western Blotting (WB)

Product Details

Immunogen:	Synthetic peptide located between aa63-112 of human RPN1 (P04843, NP_002941). Percent identity by BLAST analysis: Human, Chimpanzee, Gorilla, Orangutan, Gibbon, Marmoset, Elephant, Panda, Dog, Bovine, Rabbit, Horse, Pig (100%), Monkey, Mouse, Rat, Bat, Guinea pig (92%), Hamster (85%). Type of Immunogen: Synthetic peptide
Isotype:	IgG
Specificity:	Human RPN1
Predicted Reactivity:	Percent identity by BLAST analysis: Human, Dog, Bovine, Rabbit, Horse, Pig (100%) Mouse, Rat (92%).
Purification:	Immunoaffinity purified

Target Details

Target:	RPN1
Alternative Name:	RPN1 / Ribophorin I (RPN1 Products)
Background:	Name/Gene ID: RPN1 Synonyms: RPN1, Ribophorin-1, RPN-I, OST1, RBPH1, Ribophorin I
Gene ID:	6184
NCBI Accession:	NP_002941

Application Details

Application Notes:	Approved: WB Usage: ELISA titer using peptide based assay: 1:62500. Western Blot: Suggested dilution at 1 µg/mL in 5 % skim milk / PBS buffer, and HRP conjugated anti-Rabbit IgG should be diluted in 1:50000 - 100000 as second antibody.
Comment:	Target Species of Antibody: Human
Restrictions:	For Research Use only

Handling

Format:	Lyophilized
Reconstitution:	Distilled Water.
Concentration:	Lot specific
Buffer:	Lyophilized from PBS with 2 % sucrose
Handling Advice:	Avoid repeat freeze-thaw cycles.
Storage:	4 °C, -20 °C
Storage Comment:	Long term: -20°C, the use of 50% glycerol is recommended if storing aliquots in -20°C for long term use (up to 1 year) Short term (less than 1 week): 4°C. Avoid freeze-thaw cycles.

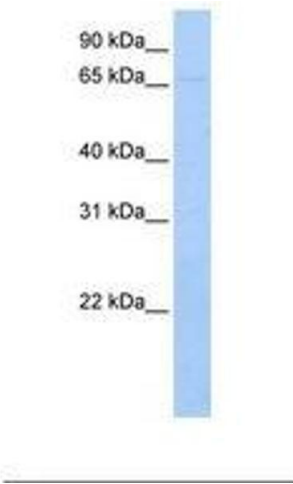


Image 1.