



[Go to Product page](#)

Datasheet for ABIN6737925
anti-SRPR antibody (AA 141-190)

1 Image

Overview

Quantity:	100 µL
Target:	SRPR
Binding Specificity:	AA 141-190
Reactivity:	Human, Mouse, Rat, Dog, Guinea Pig, Rabbit, Monkey
Host:	Rabbit
Clonality:	Polyclonal
Conjugate:	This SRPR antibody is un-conjugated
Application:	Western Blotting (WB)

Product Details

Immunogen:	Synthetic peptide located between aa141-190 of human SRPR (P08240, NP_003130). Percent identity by BLAST analysis: Human, Chimpanzee, Gorilla, Orangutan, Gibbon, Monkey, Galago, Marmoset, Rat, Panda, Dog, Rabbit, Guinea pig (100%), Elephant, Bovine, Bat, Horse (92%), Mouse, Turkey, Chicken (85%). Type of Immunogen: Synthetic peptide
Isotype:	IgG
Specificity:	Human SRPR
Predicted Reactivity:	Percent identity by BLAST analysis: Human, Dog, Rabbit, Guinea pig (100%) Bovine (92%) Mouse, Rat, Chicken (85%).
Purification:	Immunoaffinity purified

Target Details

Target:	SRPR
Alternative Name:	SRPR (SRPR Products)
Background:	Name/Gene ID: SRPR Synonyms: SRPR, DP, DP-alpha, Docking protein alpha, SR-alpha, Sralpha, SRP-alpha
Gene ID:	6734
NCBI Accession:	NP_003130
UniProt:	P08240
Pathways:	ER-Nucleus Signaling

Application Details

Application Notes:	Approved: WB Usage: ELISA titer using peptide based assay: 1:312500. Western Blot: Suggested dilution at 1 µg/mL in 5 % skim milk / PBS buffer, and HRP conjugated anti-Rabbit IgG should be diluted in 1:50000 - 100000 as second antibody.
Comment:	Target Species of Antibody: Human
Restrictions:	For Research Use only

Handling

Format:	Lyophilized
Reconstitution:	Distilled Water.
Concentration:	Lot specific
Buffer:	Lyophilized from PBS with 2 % sucrose
Handling Advice:	Avoid repeat freeze-thaw cycles.
Storage:	4 °C,-20 °C
Storage Comment:	Long term: -20°C, the use of 50% glycerol is recommended if storing aliquots in -20°C for long term use (up to 1 year) Short term (less than 1 week): 4°C. Avoid freeze-thaw cycles.

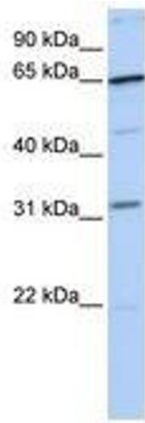


Image 1.