



[Go to Product page](#)

Datasheet for ABIN6737926
anti-XPO1 antibody (AA 809-858)

1 Image

Overview

Quantity:	100 µL
Target:	XPO1
Binding Specificity:	AA 809-858
Reactivity:	Human, Mouse, Rat, Cow, Dog, Horse, Rabbit, Monkey, Xenopus laevis, Chicken, Pig, Bat
Host:	Rabbit
Clonality:	Polyclonal
Conjugate:	This XPO1 antibody is un-conjugated
Application:	Western Blotting (WB)

Product Details

Immunogen:	Synthetic peptide located between aa809-858 of human XPO1 (O14980, NP_003391). Percent identity by BLAST analysis: Human, Chimpanzee, Gorilla, Gibbon, Monkey, Galago, Marmoset, Mouse, Rat, Elephant, Panda, Dog, Bovine, Bat, Rabbit, Horse, Pig, Opossum, Zebra finch, Chicken, Platypus, Xenopus (100%), Salmon, Zebrafish, Beetle (92%). Type of Immunogen: Synthetic peptide
Isotype:	IgG
Specificity:	Human XPO1 / CRM1
Predicted Reactivity:	Percent identity by BLAST analysis: Human, Mouse, Rat, Dog, Bovine, Rabbit, Horse, Chicken (100%) Xenopus, Zebrafish (92%).
Purification:	Immunoaffinity purified

Target Details

Target: XP01

Alternative Name: XP01 / CRM1 ([XP01 Products](#))

Background: Name/Gene ID: XP01

Synonyms: XP01, CRM1, yeast, homolog, Exp1, Exportin-1, CRM1

Gene ID: 7514

NCBI Accession: [NP_003391](#)

UniProt: [O14980](#)

Pathways: [M Phase](#)

Application Details

Application Notes: Approved: WB

Usage: ELISA titer using peptide based assay: 1:62500. Western Blot: Suggested dilution at 0.5 µg/mL in 5 % skim milk / PBS buffer, and HRP conjugated anti-Rabbit IgG should be diluted in 1:50000 - 100000 as second antibody.

Comment: Target Species of Antibody: Human

Restrictions: For Research Use only

Handling

Format: Lyophilized

Reconstitution: Distilled Water.

Concentration: Lot specific

Buffer: Lyophilized from PBS with 2 % sucrose

Handling Advice: Avoid repeat freeze-thaw cycles.

Storage: 4 °C,-20 °C

Storage Comment: Long term: -20°C, the use of 50% glycerol is recommended if storing aliquots in -20°C for long term use (up to 1 year)

Short term (less than 1 week): 4°C. Avoid freeze-thaw cycles.

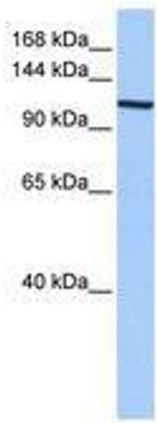


Image 1.