



[Go to Product page](#)

Datasheet for ABIN6737939  
**anti-SF3A1 antibody (AA 121-170)**

1 Image

### Overview

Quantity:	100 µL
Target:	SF3A1
Binding Specificity:	AA 121-170
Reactivity:	Human, Mouse, Rat, Dog, Cow, Horse, Rabbit, Guinea Pig, Zebrafish (Danio rerio), Xenopus laevis, Pig, Bat, Hamster, Monkey, Drosophila melanogaster
Host:	Rabbit
Clonality:	Polyclonal
Conjugate:	This SF3A1 antibody is un-conjugated
Application:	Western Blotting (WB)

### Product Details

Immunogen:	Synthetic peptide located between aa121-170 of human SF3A1 (Q15459, NP_005868). Percent identity by BLAST analysis: Human, Chimpanzee, Gorilla, Gibbon, Monkey, Galago, Marmoset, Mouse, Rat, Hamster, Elephant, Panda, Dog, Bovine, Bat, Rabbit, Horse, Pig, Opossum, Guinea pig, Xenopus, Drosophila (100%), Chicken (92%), Beetle (90%), Salmon, Zebrafish (85%).  Type of Immunogen: Synthetic peptide
Isotype:	IgG
Specificity:	Human SF3A1
Predicted Reactivity:	Percent identity by BLAST analysis: Human, Mouse, Rat, Dog, Bovine, Rabbit, Horse, Pig (100%) Chicken (92%) Zebrafish (85%).

## Product Details

---

Purification: Immunoaffinity purified

## Target Details

---

Target: SF3A1

Alternative Name: SF3A1 / SF3A120 ([SF3A1 Products](#))

Background: Name/Gene ID: SF3A1

Synonyms: SF3A1, Pre-mRNA processing 21, PRPF21, SAP 114, SAP114, SF3A120, Splicing factor 3 subunit 1, Splicing factor 3A subunit 1, PRP21

Gene ID: 10291

NCBI Accession: [NP\\_005868](#)

UniProt: [Q15459](#)

Pathways: [Ribonucleoprotein Complex Subunit Organization](#)

## Application Details

---

Application Notes: Approved: WB

Usage: ELISA titer using peptide based assay: 1:62500. Western Blot: Suggested dilution at 0.25 µg/mL in 5 % skim milk / PBS buffer, and HRP conjugated anti-Rabbit IgG should be diluted in 1:50000 - 100000 as second antibody.

Comment: Target Species of Antibody: Human

Restrictions: For Research Use only

## Handling

---

Format: Lyophilized

Reconstitution: Distilled Water.

Concentration: Lot specific

Buffer: Lyophilized from PBS with 2 % sucrose

Handling Advice: Avoid repeat freeze-thaw cycles.

Storage: 4 °C, -20 °C

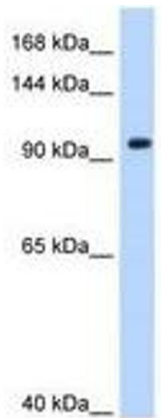
## Handling

---

Storage Comment: Long term: -20°C, the use of 50% glycerol is recommended if storing aliquots in -20°C for long term use (up to 1 year)  
Short term (less than 1 week): 4°C. Avoid freeze-thaw cycles.

## Images

---



**Image 1.**