

Datasheet for ABIN6737942 anti-PAIP1 antibody (N-Term)



[Go to Product page](#)

1 Image

Overview

| | |
|----------------------|---|
| Quantity: | 100 µL |
| Target: | PAIP1 |
| Binding Specificity: | N-Term |
| Reactivity: | Human, Mouse, Rat, Cow, Horse, Dog, Monkey, Pig |
| Host: | Rabbit |
| Clonality: | Polyclonal |
| Conjugate: | This PAIP1 antibody is un-conjugated |
| Application: | Western Blotting (WB) |

Product Details

| | |
|-----------------------|--|
| Immunogen: | Synthetic peptide from N-Terminus of human PAIP1 (Q9H074-2, NP_877590). Percent identity by BLAST analysis: Human, Chimpanzee, Gorilla, Gibbon, Monkey, Galago, Marmoset, Mouse, Rat, Elephant (100%), Rabbit, Guinea pig (92%), Panda, Dog (85%), Bovine (84%). Type of Immunogen: Synthetic peptide |
| Isotype: | IgG |
| Specificity: | Human PAIP1 |
| Predicted Reactivity: | Percent identity by BLAST analysis: Human, Mouse, Rat (100%) Guinea pig (92%) Dog (85%) Bovine (84%). |
| Purification: | Immunoaffinity purified |

Target Details

| | |
|-------------------|---|
| Target: | PAIP1 |
| Alternative Name: | PAIP1 (PAIP1 Products) |
| Background: | Name/Gene ID: PAIP1 Synonyms: PAIP1, PABC1-interacting protein 1, PABP-interacting protein 1, PAIP-1 |
| Gene ID: | 10605 |
| NCBI Accession: | NP_877590 |
| UniProt: | Q9H074 |

Application Details

| | |
|--------------------|--|
| Application Notes: | Approved: WB Usage: ELISA titer using peptide based assay: 1:62500. Western Blot: Suggested dilution at 0.5 µg/mL in 5 % skim milk / PBS buffer, and HRP conjugated anti-Rabbit IgG should be diluted in 1:50000 - 100000 as second antibody. |
| Comment: | Target Species of Antibody: Human |
| Restrictions: | For Research Use only |

Handling

| | |
|------------------|---|
| Format: | Lyophilized |
| Reconstitution: | Distilled Water. |
| Concentration: | Lot specific |
| Buffer: | Lyophilized from PBS with 2 % sucrose |
| Handling Advice: | Avoid repeat freeze-thaw cycles. |
| Storage: | 4 °C, -20 °C |
| Storage Comment: | Long term: -20°C, the use of 50% glycerol is recommended if storing aliquots in -20°C for long term use (up to 1 year) Short term (less than 1 week): 4°C. Avoid freeze-thaw cycles. |

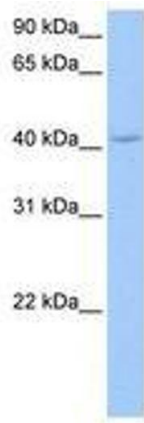


Image 1.