



[Go to Product page](#)

Datasheet for ABIN6737943  
**anti-KHDRBS1 antibody (AA 104-153)**

1 Image

Overview

Quantity:	100 µL
Target:	KHDRBS1
Binding Specificity:	AA 104-153
Reactivity:	Human, Rabbit, Cow, Guinea Pig, Dog, Pig, Horse, Monkey
Host:	Rabbit
Clonality:	Polyclonal
Conjugate:	This KHDRBS1 antibody is un-conjugated
Application:	Western Blotting (WB)

Product Details

Immunogen:	Synthetic peptide located between aa104-153 of human KHDRBS1 (Q07666, NP_006550). Percent identity by BLAST analysis: Human, Chimpanzee, Gorilla, Monkey, Galago, Marmoset, Elephant, Panda, Dog, Bovine, Rabbit, Horse, Pig, Guinea pig (100%), Gibbon, Mouse, Rat, Hamster, Bat, Opossum, Platypus (92%).  Type of Immunogen: Synthetic peptide
Isotype:	IgG
Specificity:	Human KHDRBS1 / SAM68
Predicted Reactivity:	Percent identity by BLAST analysis: Human, Dog, Bovine, Rabbit, Horse (100%).
Purification:	Immunoaffinity purified

## Target Details

---

Target:	KHDRBS1
Alternative Name:	KHDRBS1 / SAM68 / p62 ( <a href="#">KHDRBS1 Products</a> )
Background:	Name/Gene ID: KHDRBS1  Synonyms: KHDRBS1, p62, Sam68, p68
Gene ID:	10657
NCBI Accession:	<a href="#">NP_006550</a>
UniProt:	<a href="#">Q07666</a>
Pathways:	<a href="#">NF-kappaB Signaling</a> , <a href="#">Neurotrophin Signaling Pathway</a> , <a href="#">Autophagy</a>

## Application Details

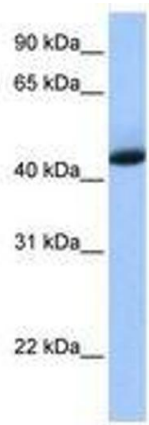
---

Application Notes:	Approved: WB  Usage: ELISA titer using peptide based assay: 1:12500. Western Blot: Suggested dilution at 1 $\mu$ g/mL in 5 % skim milk / PBS buffer, and HRP conjugated anti-Rabbit IgG should be diluted in 1:50000 - 100000 as second antibody.
Comment:	Target Species of Antibody: Human
Restrictions:	For Research Use only

## Handling

---

Format:	Lyophilized
Reconstitution:	Distilled Water.
Concentration:	Lot specific
Buffer:	Lyophilized from PBS with 2 % sucrose
Handling Advice:	Avoid repeat freeze-thaw cycles.
Storage:	4 °C,-20 °C
Storage Comment:	Long term: -20°C, the use of 50% glycerol is recommended if storing aliquots in -20°C for long term use (up to 1 year)  Short term (less than 1 week): 4°C. Avoid freeze-thaw cycles.



**Image 1.**