



Datasheet for ABIN6737945
anti-KRR1 antibody (AA 290-339)



[Go to Product page](#)

1 Image

Overview

Quantity:	100 µL
Target:	KRR1
Binding Specificity:	AA 290-339
Reactivity:	Human, Mouse, Horse, Zebrafish (Danio rerio), Monkey
Host:	Rabbit
Clonality:	Polyclonal
Conjugate:	This KRR1 antibody is un-conjugated
Application:	Western Blotting (WB)

Product Details

Immunogen:	Synthetic peptide located between aa290-339 of human KRR1 (Q13601, NP_008974). Percent identity by BLAST analysis: Human, Chimpanzee, Gorilla, Gibbon, Marmoset (100%), Panda, Dog, Bovine, Rabbit, Pig, Guinea pig, Lizard (92%), Monkey, Mouse, Rat, Elephant, Horse, Opossum, Xenopus, Zebrafish (85%). Type of Immunogen: Synthetic peptide
Isotype:	IgG
Specificity:	Human KRR1
Predicted Reactivity:	Percent identity by BLAST analysis: Human (100%) Dog, Bovine, Pig, Guinea pig (92%) Mouse, Horse, Xenopus, Zebrafish (85%).
Purification:	Immunoaffinity purified

Target Details

Target:	KRR1
Alternative Name:	RIP-1 / KRR1 (KRR1 Products)
Background:	Name/Gene ID: KRR1 Synonyms: KRR1, HIV-1 Rev binding protein 2, HIV-1 Rev-binding protein 2, Rev-interacting protein 1, Rev interacting protein, RIP-1, HRB2
Gene ID:	11103
NCBI Accession:	NP_008974
UniProt:	Q13601

Application Details

Application Notes:	Approved: WB Usage: ELISA titer using peptide based assay: 1:62500. Western Blot: Suggested dilution at 1 μ g/mL in 5 % skim milk / PBS buffer, and HRP conjugated anti-Rabbit IgG should be diluted in 1:50000 - 100000 as second antibody.
Comment:	Target Species of Antibody: Human
Restrictions:	For Research Use only

Handling

Format:	Lyophilized
Reconstitution:	Distilled Water.
Concentration:	Lot specific
Buffer:	Lyophilized from PBS with 2 % sucrose
Handling Advice:	Avoid repeat freeze-thaw cycles.
Storage:	4 °C,-20 °C
Storage Comment:	Long term: -20°C, the use of 50% glycerol is recommended if storing aliquots in -20°C for long term use (up to 1 year) Short term (less than 1 week): 4°C. Avoid freeze-thaw cycles.

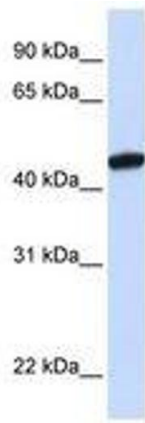


Image 1.