

Datasheet for ABIN6737959  
**anti-SRBD1 antibody (N-Term)**[Go to Product page](#)

## 1 Image

## Overview

Quantity:	100 µL
Target:	SRBD1
Binding Specificity:	N-Term
Reactivity:	Human, Mouse, Rabbit, Horse, Dog, Bat, Monkey
Host:	Rabbit
Clonality:	Polyclonal
Conjugate:	This SRBD1 antibody is un-conjugated
Application:	Western Blotting (WB)

## Product Details

Immunogen:	Synthetic peptide from N-Terminus of human SRBD1 (Q8N5C6, NP_060549). Percent identity by BLAST analysis: Human, Gorilla, Orangutan, Gibbon, Marmoset, Panda, Dog, Bat, Rabbit, Horse (100%), Bovine (92%), Galago, Mouse (85%), Zebrafish (80%).  Type of Immunogen: Synthetic peptide
Isotype:	IgG
Specificity:	Human SRBD1
Predicted Reactivity:	Percent identity by BLAST analysis: Human, Dog, Rabbit, Horse (100%) Bovine (92%) Mouse (85%).
Purification:	Immunoaffinity purified

## Target Details

Target:	SRBD1
Alternative Name:	SRBD1 ( <a href="#">SRBD1 Products</a> )
Background:	Name/Gene ID: SRBD1  Synonyms: SRBD1, H_NH0576F01.1, S1 RNA binding domain 1, WUGSC:H_NH0576F01.1
Gene ID:	55133
NCBI Accession:	<a href="#">NP_060549</a>
UniProt:	<a href="#">Q8N5C6</a>

## Application Details

Application Notes:	Approved: WB  Usage: ELISA titer using peptide based assay: 1:62500. Western Blot: Suggested dilution at 1 µg/mL in 5 % skim milk / PBS buffer, and HRP conjugated anti-Rabbit IgG should be diluted in 1:50000 - 100000 as second antibody.
Comment:	Target Species of Antibody: Human
Restrictions:	For Research Use only

## Handling

Format:	Lyophilized
Reconstitution:	Distilled Water.
Concentration:	Lot specific
Buffer:	Lyophilized from PBS with 2 % sucrose
Handling Advice:	Avoid repeat freeze-thaw cycles.
Storage:	4 °C, -20 °C
Storage Comment:	Long term: -20°C, the use of 50% glycerol is recommended if storing aliquots in -20°C for long term use (up to 1 year)  Short term (less than 1 week): 4°C. Avoid freeze-thaw cycles.

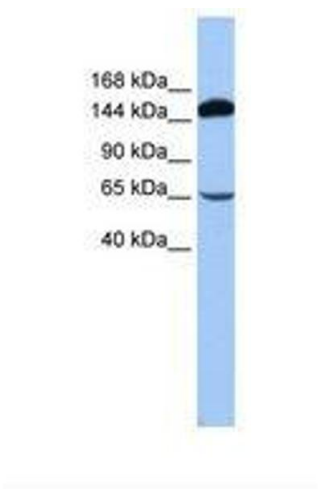


Image 1.