

Datasheet for ABIN6737961
anti-Splicing Factor 4 antibody (N-Term)



[Go to Product page](#)

1 Image

Overview

Quantity:	100 µL
Target:	Splicing Factor 4 (SF4)
Binding Specificity:	N-Term
Reactivity:	Human, Mouse, Rat, Dog, Horse, Cow, Guinea Pig, Bat
Host:	Rabbit
Clonality:	Polyclonal
Conjugate:	This Splicing Factor 4 antibody is un-conjugated
Application:	Western Blotting (WB)

Product Details

Immunogen:	Synthetic peptide from N-Terminus of human SUGP1 (Q8IWZ8, NP_757386). Percent identity by BLAST analysis: Human, Chimpanzee, Gorilla, Gibbon, Mouse, Rat, Elephant, Dog, Bovine, Bat, Horse, Opossum, Guinea pig, Zebra finch, Platypus (100%), Orangutan, Turkey, Chicken (92%), Stickleback (84%). Type of Immunogen: Synthetic peptide
Isotype:	IgG
Specificity:	Human SUGP1 / SF4
Predicted Reactivity:	Percent identity by BLAST analysis: Human, Rat (100%).
Purification:	Immunoaffinity purified

Target Details

Target: Splicing Factor 4 (SF4)

Alternative Name: SUGP1 / SF4 ([SF4 Products](#))

Background: Name/Gene ID: SUGP1

Synonyms: SUGP1, RNA-binding protein RBP, SF4, Splicing factor 4, F23858, RBP

Gene ID: 57794

NCBI Accession: [NP_757386](#)

UniProt: [Q8IWZ8](#)

Application Details

Application Notes: Approved: WB

Usage: ELISA titer using peptide based assay: 1:312500. Western Blot: Suggested dilution at 0.5 µg/mL in 5 % skim milk / PBS buffer, and HRP conjugated anti-Rabbit IgG should be diluted in 1:50000 - 100000 as second antibody.

Comment: Target Species of Antibody: Human

Restrictions: For Research Use only

Handling

Format: Lyophilized

Reconstitution: Distilled Water.

Concentration: Lot specific

Buffer: Lyophilized from PBS with 2 % sucrose

Handling Advice: Avoid repeat freeze-thaw cycles.

Storage: 4 °C, -20 °C

Storage Comment: Long term: -20°C, the use of 50% glycerol is recommended if storing aliquots in -20°C for long term use (up to 1 year)

Short term (less than 1 week): 4°C. Avoid freeze-thaw cycles.

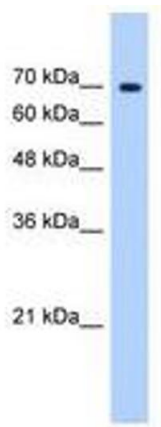


Image 1.