



[Go to Product page](#)

Datasheet for ABIN6737967
anti-C7orf64 antibody (AA 297-346)

1 Image

Overview

Quantity:	100 µL
Target:	C7orf64
Binding Specificity:	AA 297-346
Reactivity:	Human, Mouse
Host:	Rabbit
Clonality:	Polyclonal
Conjugate:	This C7orf64 antibody is un-conjugated
Application:	Western Blotting (WB)

Product Details

Immunogen:	Synthetic peptide located between aa297-346 of human RBM48 (Q5RL73, NP_115496). Percent identity by BLAST analysis: Human, Gorilla, Orangutan, Gibbon (100%), Monkey, Galago, Marmoset, Rat, Dog, Bat, Pig (92%), Mouse, Elephant, Panda, Horse, Guinea pig (85%), Lizard (83%). Type of Immunogen: Synthetic peptide
Isotype:	IgG
Specificity:	Human C7orf64 / DKFZP564O0523
Predicted Reactivity:	Percent identity by BLAST analysis: Human, Orangutan (100%) Rat (92%) Mouse (85%).
Purification:	Immunoaffinity purified

Target Details

Target:	C7orf64
Alternative Name:	HSPC304 / C7orf64 (C7orf64 Products)
Background:	Name/Gene ID: RBM48 Synonyms: RBM48, C7orf64, DKFZP56400523, HSPC304, RNA binding motif protein 48, UPF0712 protein C7orf64, RGD1310794, RNA-binding protein 48
Gene ID:	84060
NCBI Accession:	NP_115496
UniProt:	Q5RL73

Application Details

Application Notes:	Approved: WB Usage: ELISA titer using peptide based assay: 1:62500. Western Blot: Suggested dilution at 0.5 µg/mL in 5 % skim milk / PBS buffer, and HRP conjugated anti-Rabbit IgG should be diluted in 1:50000 - 100000 as second antibody.
Comment:	Target Species of Antibody: Human
Restrictions:	For Research Use only

Handling

Format:	Lyophilized
Reconstitution:	Distilled Water.
Concentration:	Lot specific
Buffer:	Lyophilized from PBS with 2 % sucrose
Handling Advice:	Avoid repeat freeze-thaw cycles.
Storage:	4 °C,-20 °C
Storage Comment:	Long term: -20°C, the use of 50% glycerol is recommended if storing aliquots in -20°C for long term use (up to 1 year) Short term (less than 1 week): 4°C. Avoid freeze-thaw cycles.

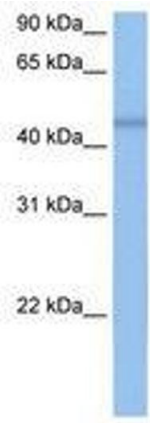


Image 1.