



[Go to Product page](#)

Datasheet for ABIN6737970  
**anti-ALKBH8 antibody (N-Term)**

1 Image

Overview

Quantity:	100 µL
Target:	ALKBH8
Binding Specificity:	N-Term
Reactivity:	Human, Guinea Pig, Horse, Cow, Monkey
Host:	Rabbit
Clonality:	Polyclonal
Conjugate:	This ALKBH8 antibody is un-conjugated
Application:	Western Blotting (WB)

Product Details

Immunogen:	Synthetic peptide from N-Terminus of human ALKBH8 (Q96BT7). Percent identity by BLAST analysis: Human, Chimpanzee, Gorilla, Gibbon, Monkey, Bovine (100%), Galago, Dog (92%), Horse (85%).  Type of Immunogen: Synthetic peptide
Isotype:	IgG
Specificity:	Human ALKBH8
Predicted Reactivity:	Percent identity by BLAST analysis: Human (100%) Dog (92%) Horse (85%).
Purification:	Immunoaffinity purified

## Target Details

---

Target: ALKBH8

Alternative Name: ALKBH8 ([ALKBH8 Products](#))

Background: Name/Gene ID: ALKBH8

Synonyms: ALKBH8, AlkB homologue 8, ABH8

Gene ID: 91801

UniProt: [Q96BT7](#)

## Application Details

---

Application Notes: Approved: WB

Usage: ELISA titer using peptide based assay: 1:312500. Western Blot: Suggested dilution at 0.5 µg/mL in 5 % skim milk / PBS buffer, and HRP conjugated anti-Rabbit IgG should be diluted in 1:50000 - 100000 as second antibody.

Comment: Target Species of Antibody: Human

Restrictions: For Research Use only

## Handling

---

Format: Lyophilized

Reconstitution: Distilled Water.

Concentration: Lot specific

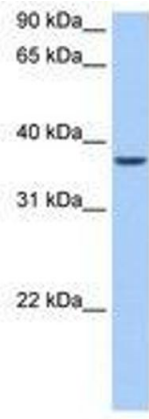
Buffer: Lyophilized from PBS with 2 % sucrose

Handling Advice: Avoid repeat freeze-thaw cycles.

Storage: 4 °C, -20 °C

Storage Comment: Long term: -20°C, the use of 50% glycerol is recommended if storing aliquots in -20°C for long term use (up to 1 year)

Short term (less than 1 week): 4°C. Avoid freeze-thaw cycles.



**Image 1.**