



[Go to Product page](#)

Datasheet for ABIN6737971

## anti-RPUSD2 antibody (AA 417-466)

### 1 Image

#### Overview

Quantity:	100 µL
Target:	RPUSD2
Binding Specificity:	AA 417-466
Reactivity:	Human, Cow, Dog
Host:	Rabbit
Clonality:	Polyclonal
Conjugate:	This RPUSD2 antibody is un-conjugated
Application:	Western Blotting (WB)

#### Product Details

Immunogen:	Synthetic peptide located between aa417-466 of human RPUSD2 (Q8IZ73, NP_689473). Percent identity by BLAST analysis: Human, Chimpanzee (100%), Gibbon, Monkey, Marmoset, Rat, Bat, Horse (92%), Gorilla, Bovine (85%), Mouse (84%).  Type of Immunogen: Synthetic peptide
Isotype:	IgG
Specificity:	Human RPUSD2
Predicted Reactivity:	Percent identity by BLAST analysis: Human (100%) Rat, Horse (92%) Bovine (85%).
Purification:	Immunoaffinity purified

## Target Details

---

Target:	RPUSD2
Alternative Name:	RPUSD2 ( <a href="#">RPUSD2 Products</a> )
Background:	Name/Gene ID: RPUSD2  Synonyms: RPUSD2, C15orf19, C18B11
Gene ID:	27079
NCBI Accession:	<a href="#">NP_689473</a>
UniProt:	<a href="#">Q8IZ73</a>

## Application Details

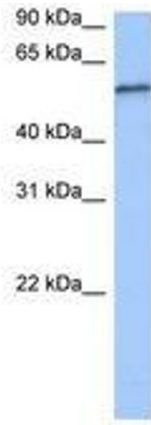
---

Application Notes:	Approved: WB  Usage: ELISA titer using peptide based assay: 1:312500. Western Blot: Suggested dilution at 0.5 µg/mL in 5 % skim milk / PBS buffer, and HRP conjugated anti-Rabbit IgG should be diluted in 1:50000 - 100000 as second antibody.
Comment:	Target Species of Antibody: Human
Restrictions:	For Research Use only

## Handling

---

Format:	Lyophilized
Reconstitution:	Distilled Water.
Concentration:	Lot specific
Buffer:	Lyophilized from PBS with 2 % sucrose
Handling Advice:	Avoid repeat freeze-thaw cycles.
Storage:	4 °C, -20 °C
Storage Comment:	Long term: -20°C, the use of 50% glycerol is recommended if storing aliquots in -20°C for long term use (up to 1 year)  Short term (less than 1 week): 4°C. Avoid freeze-thaw cycles.



**Image 1.**