

Datasheet for ABIN6737985  
**anti-XPNPEP2 antibody (AA 362-411)**



[Go to Product page](#)

1 Image

## Overview

Quantity:	100 µL
Target:	XPNPEP2
Binding Specificity:	AA 362-411
Reactivity:	Human, Mouse, Rat, Dog, Horse, Guinea Pig, Monkey, Bat
Host:	Rabbit
Clonality:	Polyclonal
Conjugate:	This XPNPEP2 antibody is un-conjugated
Application:	Western Blotting (WB)

## Product Details

Immunogen:	<p>Synthetic peptide located between aa362-411 of human XPNPEP2 (O43895, NP_003390).                      Percent identity by BLAST analysis: Human, Gorilla, Gibbon, Monkey, Marmoset, Mouse, Rat, Elephant, Dog, Bat, Guinea pig (100%), Galago, Bovine, Rabbit, Pig, Opossum, Platypus (92%), Horse (85%), Sea squirt (84%).</p> <p>Type of Immunogen: Synthetic peptide</p>
Isotype:	IgG
Specificity:	Human XPNPEP2
Predicted Reactivity:	Percent identity by BLAST analysis: Human, Mouse, Rat, Dog, Guinea pig (100%) Bovine, Rabbit, Pig (92%) Horse (85%).
Purification:	Immunoaffinity purified

## Target Details

---

Target:	XPNPEP2
Alternative Name:	XPNPEP2 ( <a href="#">XPNPEP2 Products</a> )
Background:	Name/Gene ID: XPNPEP2 Subfamily: Metallopeptidase M24B Family: Protease  Synonyms: XPNPEP2, APP2, MAmP, Membrane-bound APP, X-prolyl aminopeptidase 2, Xaa-Pro aminopeptidase 2, X-Pro aminopeptidase 2, Membrane-bound AmP
Gene ID:	7512
NCBI Accession:	<a href="#">NP_003390</a>
UniProt:	<a href="#">O43895</a>

## Application Details

---

Application Notes:	Approved: WB  Usage: ELISA titer using peptide based assay: 1:312500. Western Blot: Suggested dilution at 1 µg/mL in 5 % skim milk / PBS buffer, and HRP conjugated anti-Rabbit IgG should be diluted in 1:50000 - 100000 as second antibody.
Comment:	Target Species of Antibody: Human
Restrictions:	For Research Use only

## Handling

---

Format:	Lyophilized
Reconstitution:	Distilled Water.
Concentration:	Lot specific
Buffer:	Lyophilized from PBS with 2 % sucrose
Handling Advice:	Avoid repeat freeze-thaw cycles.
Storage:	4 °C, -20 °C
Storage Comment:	Long term: -20°C, the use of 50% glycerol is recommended if storing aliquots in -20°C for long term use (up to 1 year)

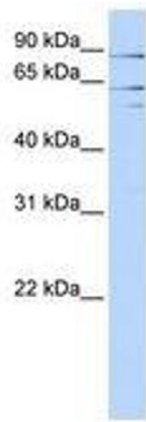
## Handling

---

Short term (less than 1 week): 4°C. Avoid freeze-thaw cycles.

## Images

---



**Image 1.**