



Datasheet for ABIN6737991
anti-ALAS2 antibody (AA 38-87)



[Go to Product page](#)

1 Image

Overview

Quantity:	100 µL
Target:	ALAS2
Binding Specificity:	AA 38-87
Reactivity:	Human, Mouse, Cow, Rabbit, Pig, Bat, Monkey
Host:	Rabbit
Clonality:	Polyclonal
Conjugate:	This ALAS2 antibody is un-conjugated
Application:	Western Blotting (WB)

Product Details

Immunogen:	Synthetic peptide located between aa38-87 of human ALAS2 (P22557, NP_001033056). Percent identity by BLAST analysis: Human, Gorilla, Orangutan, Gibbon, Monkey, Marmoset, Mouse, Bovine, Bat, Pig (100%), Galago, Rat (92%), Elephant (85%). Type of Immunogen: Synthetic peptide
Isotype:	IgG
Specificity:	Human ALAS2
Predicted Reactivity:	Percent identity by BLAST analysis: Human, Mouse, Pig (100%) Rat (92%).
Purification:	Immunoaffinity purified

Target Details

Target:	ALAS2
Alternative Name:	ALAS2 (ALAS2 Products)
Background:	Name/Gene ID: ALAS2 Synonyms: ALAS2, ALASE, ANH1, ASB, Delta-ALA synthetase, ALAS-E, XLDPP, XLSA, Delta-ALA synthase 2, XLEPP
Gene ID:	212
NCBI Accession:	NP_001033056
UniProt:	P22557
Pathways:	Transition Metal Ion Homeostasis

Application Details

Application Notes:	Approved: WB Usage: ELISA titer using peptide based assay: 1:312500. Western Blot: Suggested dilution at 1 µg/mL in 5 % skim milk / PBS buffer, and HRP conjugated anti-Rabbit IgG should be diluted in 1:50000 - 100000 as second antibody.
Comment:	Target Species of Antibody: Human
Restrictions:	For Research Use only

Handling

Format:	Lyophilized
Reconstitution:	Distilled Water.
Concentration:	Lot specific
Buffer:	Lyophilized from PBS with 2 % sucrose
Handling Advice:	Avoid repeat freeze-thaw cycles.
Storage:	4 °C, -20 °C
Storage Comment:	Long term: -20°C, the use of 50% glycerol is recommended if storing aliquots in -20°C for long term use (up to 1 year) Short term (less than 1 week): 4°C. Avoid freeze-thaw cycles.

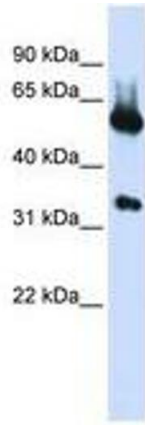


Image 1.