

Datasheet for ABIN6737993
anti-ASL antibody (AA 101-150)[Go to Product page](#)

1 Image

Overview

Quantity:	100 µL
Target:	ASL
Binding Specificity:	AA 101-150
Reactivity:	Human, Mouse, Rat, Cow, Zebrafish (Danio rerio), Guinea Pig, Horse, Rabbit, Bat, Chicken, Hamster, Monkey, Pig, Xenopus laevis
Host:	Rabbit
Clonality:	Polyclonal
Conjugate:	This ASL antibody is un-conjugated
Application:	Western Blotting (WB)

Product Details

Immunogen:	Synthetic peptide located between aa101-150 of human ASL (P04424, NP_000039). Percent identity by BLAST analysis: Human, Gorilla, Gibbon, Monkey, Marmoset, Mouse, Rat, Hamster, Elephant, Bovine, Bat, Rabbit, Horse, Pig, Opossum, Guinea pig, Zebra finch, Chicken, Platypus, Xenopus, Frog, Smelt, Stickleback, Zebrafish, Sea squirt (100%), Bloom alga (92%). Type of Immunogen: Synthetic peptide
Isotype:	IgG
Specificity:	Human ASL
Predicted Reactivity:	Percent identity by BLAST analysis: Human, Mouse, Rat, Bovine, Rabbit, Horse, Chicken, Xenopus, Zebrafish (100%).

Product Details

Purification: Immunoaffinity purified

Target Details

Target: ASL

Alternative Name: Argininosuccinate Lyase / ASL ([ASL Products](#))

Background: Name/Gene ID: ASL

Synonyms: ASL, ASAL, Argininosuccinate lyase, Argininosuccinase, Argininosuccinase

Gene ID: 435

NCBI Accession: [NP_000039](#)

UniProt: [P04424](#)

Pathways: [Response to Growth Hormone Stimulus](#)

Application Details

Application Notes: Approved: WB

Usage: ELISA titer using peptide based assay: 1:62500. Western Blot: Suggested dilution at 0.25 µg/mL in 5 % skim milk / PBS buffer, and HRP conjugated anti-Rabbit IgG should be diluted in 1:50000 - 100000 as second antibody.

Comment: Target Species of Antibody: Human

Restrictions: For Research Use only

Handling

Format: Lyophilized

Reconstitution: Distilled Water.

Concentration: Lot specific

Buffer: Lyophilized from PBS with 2 % sucrose

Handling Advice: Avoid repeat freeze-thaw cycles.

Storage: 4 °C, -20 °C

Storage Comment: Long term: -20°C, the use of 50% glycerol is recommended if storing aliquots in -20°C for long

Handling

term use (up to 1 year)

Short term (less than 1 week): 4°C. Avoid freeze-thaw cycles.

Images

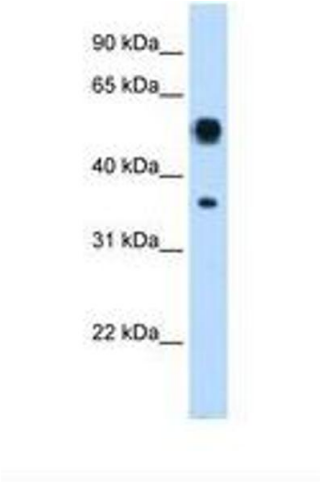


Image 1.