

Datasheet for ABIN6737994  
**anti-Complement C2 antibody (AA 201-250)**[Go to Product page](#)

## 1 Image

## Overview

Quantity:	100 µL
Target:	Complement C2
Binding Specificity:	AA 201-250
Reactivity:	Human, Rat, Mouse, Pig, Horse, Cow, Monkey
Host:	Rabbit
Clonality:	Polyclonal
Conjugate:	This Complement C2 antibody is un-conjugated
Application:	Western Blotting (WB)

## Product Details

Immunogen:	Synthetic peptide located between aa201-250 of human C2 (P06681, NP_000054). Percent identity by BLAST analysis: Human, Chimpanzee, Gorilla, Orangutan, Monkey, Mouse, Rat, Elephant, Panda, Bovine, Horse, Pig (100%), Dog, Guinea pig (92%), Opossum (85%).  Type of Immunogen: Synthetic peptide
Isotype:	IgG
Specificity:	Human C2
Predicted Reactivity:	Percent identity by BLAST analysis: Human, Mouse, Rat, Bovine, Horse, Pig (100%) Dog, Guinea pig (92%).
Purification:	Immunoaffinity purified

## Target Details

Target:	Complement C2
Abstract:	<a href="#">Complement C2 Products</a>
Background:	Name/Gene ID: C2 Subfamily: Serine S1 Family: Protease  Synonyms: C2, C2b, C3/C5 convertase, Complement component C2, Complement C2, Complement component 2, C02
Gene ID:	717
NCBI Accession:	<a href="#">NP_000054</a>
UniProt:	<a href="#">P06681</a>

## Application Details

Application Notes:	Approved: WB  Usage: ELISA titer using peptide based assay: 1:312500. Western Blot: Suggested dilution at 1 µg/mL in 5 % skim milk / PBS buffer, and HRP conjugated anti-Rabbit IgG should be diluted in 1:50000 - 100000 as second antibody.
Comment:	Target Species of Antibody: Human
Restrictions:	For Research Use only

## Handling

Format:	Lyophilized
Reconstitution:	Distilled Water.
Concentration:	Lot specific
Buffer:	Lyophilized from PBS with 2 % sucrose
Handling Advice:	Avoid repeat freeze-thaw cycles.
Storage:	4 °C, -20 °C
Storage Comment:	Long term: -20°C, the use of 50% glycerol is recommended if storing aliquots in -20°C for long term use (up to 1 year)

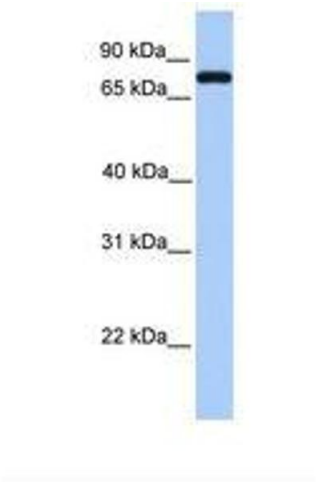
Handling

---

Short term (less than 1 week): 4°C. Avoid freeze-thaw cycles.

Images

---



**Image 1.**