



Datasheet for ABIN6737998

anti-Coagulation Factor X antibody (AA 351-400)



[Go to Product page](#)

1 Image

Overview

Quantity:	100 µL
Target:	Coagulation Factor X (F10)
Binding Specificity:	AA 351-400
Reactivity:	Human, Mouse, Rat, Dog, Guinea Pig, Pig, Monkey
Host:	Rabbit
Clonality:	Polyclonal
Conjugate:	This Coagulation Factor X antibody is un-conjugated
Application:	Western Blotting (WB)

Product Details

Immunogen:	Synthetic peptide located between aa351-400 of human F10 (P00742, NP_000495). Percent identity by BLAST analysis: Human, Chimpanzee, Gorilla, Gibbon, Baboon, Monkey, Marmoset, Mouse, Rat, Guinea pig (100%), Elephant, Bovine, Horse (92%), Dog, Rabbit, Platypus (85%), Galago, Pig (84%), Xenopus (80%). Type of Immunogen: Synthetic peptide
Isotype:	IgG
Specificity:	Human F10 / Factor X
Predicted Reactivity:	Percent identity by BLAST analysis: Human, Mouse, Rat, Guinea pig (100%) Bovine (92%) Dog (85%) Pig (84%).
Purification:	Immunoaffinity purified

Target Details

Target:	Coagulation Factor X (F10)
Alternative Name:	F10 / Factor X (F10 Products)
Background:	Name/Gene ID: F10 Subfamily: Serine S1 Family: Protease Synonyms: F10, Factor X, FX, Factor X deficiency, Stuart factor, Stuart-Prower factor, Coagulation factor X, Factor Xa, FXA, Prothrombinase

Gene ID: 2159

NCBI Accession: [NP_000495](#)

UniProt: [P00742](#)

Application Details

Application Notes:	Approved: WB Usage: ELISA titer using peptide based assay: 1:62500. Western Blot: Suggested dilution at 1 μ g/mL in 5 % skim milk / PBS buffer, and HRP conjugated anti-Rabbit IgG should be diluted in 1:50000 - 100000 as second antibody.
--------------------	---

Comment: Target Species of Antibody: Human

Restrictions: For Research Use only

Handling

Format:	Lyophilized
Reconstitution:	Distilled Water.
Concentration:	Lot specific
Buffer:	Lyophilized from PBS with 2 % sucrose
Handling Advice:	Avoid repeat freeze-thaw cycles.
Storage:	4 °C, -20 °C
Storage Comment:	Long term: -20°C, the use of 50% glycerol is recommended if storing aliquots in -20°C for long term use (up to 1 year)

Handling

Short term (less than 1 week): 4°C. Avoid freeze-thaw cycles.

Images

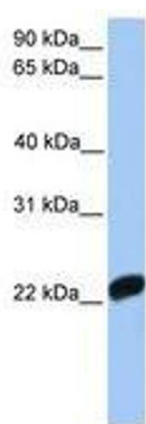


Image 1.