

Datasheet for ABIN6738002
anti-GHRHR antibody (AA 74-123)



[Go to Product page](#)

1 Image

Overview

Quantity:	100 µL
Target:	GHRHR
Binding Specificity:	AA 74-123
Reactivity:	Human, Pig, Cow, Sheep, Rabbit, Monkey, Guinea Pig
Host:	Rabbit
Clonality:	Polyclonal
Conjugate:	This GHRHR antibody is un-conjugated
Application:	Western Blotting (WB)

Product Details

Immunogen:	Synthetic peptide located between aa74-123 of human GHRHR (Q02643, NP_000814). Percent identity by BLAST analysis: Human, Chimpanzee, Gorilla, Marmoset (100%), Gibbon, Panda, Dog (92%), Zebu, Bovine, Pig (85%), Guinea pig (84%). Type of Immunogen: Synthetic peptide
Isotype:	IgG
Specificity:	Human GHRHR
Predicted Reactivity:	Percent identity by BLAST analysis: Human (100%) Dog (92%) Bovine, Pig (85%) Guinea pig (84%).
Purification:	Immunoaffinity purified

Target Details

Target:	GHRHR
Alternative Name:	GHRHR (GHRHR Products)
Background:	Name/Gene ID: GHRHR Subfamily: Growth hormone releasing hormone Family: GPCR Synonyms: GHRHR, GHRFR, GRFR, IGHD1B, GRF receptor, GH-releasing hormone receptor, GHRH receptor, Ghrh-r
Gene ID:	2692
NCBI Accession:	NP_000814
UniProt:	Q02643
Pathways:	Intracellular Steroid Hormone Receptor Signaling Pathway , Hormone Transport , Regulation of Intracellular Steroid Hormone Receptor Signaling , cAMP Metabolic Process

Application Details

Application Notes:	Approved: WB Usage: ELISA titer using peptide based assay: 1:312500. Western Blot: Suggested dilution at 1 µg/mL in 5 % skim milk / PBS buffer, and HRP conjugated anti-Rabbit IgG should be diluted in 1:50000 - 100000 as second antibody.
Comment:	Target Species of Antibody: Human
Restrictions:	For Research Use only

Handling

Format:	Lyophilized
Reconstitution:	Distilled Water.
Concentration:	Lot specific
Buffer:	Lyophilized from PBS with 2 % sucrose
Handling Advice:	Avoid repeat freeze-thaw cycles.
Storage:	4 °C, -20 °C

Handling

Storage Comment: Long term: -20°C, the use of 50% glycerol is recommended if storing aliquots in -20°C for long term use (up to 1 year)
Short term (less than 1 week): 4°C. Avoid freeze-thaw cycles.

Images

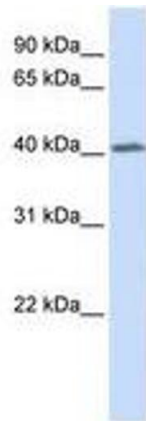


Image 1.