



[Go to Product page](#)

Datasheet for ABIN6738005  
**anti-LSS antibody (N-Term)**

1 Image

Overview

Quantity:	100 µL
Target:	LSS
Binding Specificity:	N-Term
Reactivity:	Human, Mouse, Rat, Cow, Rabbit, Zebrafish (Danio rerio), Guinea Pig, Bat, Hamster, Monkey
Host:	Rabbit
Clonality:	Polyclonal
Conjugate:	This LSS antibody is un-conjugated
Application:	Western Blotting (WB)

Product Details

Immunogen:	Synthetic peptide from N-Terminus of human LSS (P48449, NP_002331). Percent identity by BLAST analysis: Human, Chimpanzee, Gorilla, Monkey, Galago, Mouse, Rat, Hamster, Bovine, Bat, Rabbit, Guinea pig, Lizard, Stickleback, Zebrafish (100%), Elephant, Horse, Opossum, Xenopus (92%).  Type of Immunogen: Synthetic peptide
Isotype:	IgG
Specificity:	Human LSS
Predicted Reactivity:	Percent identity by BLAST analysis: Human, Rat, Bovine, Rabbit, Zebrafish (100%) Horse (92%).
Purification:	Immunoaffinity purified

## Target Details

---

Target:	LSS
Alternative Name:	LSS ( <a href="#">LSS Products</a> )
Background:	Name/Gene ID: LSS  Synonyms: LSS, Lanosterol synthase, HOSC, OSC
Gene ID:	4047
NCBI Accession:	<a href="#">NP_002331</a>
UniProt:	<a href="#">P48449</a>

## Application Details

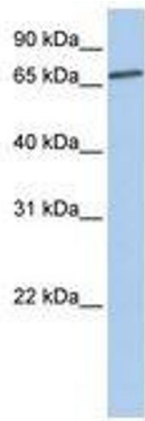
---

Application Notes:	Approved: WB  Usage: ELISA titer using peptide based assay: 1:312500. Western Blot: Suggested dilution at 1 µg/mL in 5 % skim milk / PBS buffer, and HRP conjugated anti-Rabbit IgG should be diluted in 1:50000 - 100000 as second antibody.  Not recommended for: IHC-P
Comment:	Target Species of Antibody: Human
Restrictions:	For Research Use only

## Handling

---

Format:	Lyophilized
Reconstitution:	Distilled Water.
Concentration:	Lot specific
Buffer:	Lyophilized from PBS with 2 % sucrose
Handling Advice:	Avoid repeat freeze-thaw cycles.
Storage:	4 °C, -20 °C
Storage Comment:	Long term: -20°C, the use of 50% glycerol is recommended if storing aliquots in -20°C for long term use (up to 1 year)  Short term (less than 1 week): 4°C. Avoid freeze-thaw cycles.



**Image 1.**