

Datasheet for ABIN6738026
anti-MAK antibody (C-Term)[Go to Product page](#)

1 Image

Overview

Quantity:	100 µL
Target:	MAK
Binding Specificity:	C-Term
Reactivity:	Human, Rat, Mouse, Rabbit, Monkey
Host:	Rabbit
Clonality:	Polyclonal
Conjugate:	This MAK antibody is un-conjugated
Application:	Western Blotting (WB)

Product Details

Immunogen:	Synthetic peptide from C-Terminus of human MAK (P20794, NP_005897). Percent identity by BLAST analysis: Human, Chimpanzee, Gorilla, Gibbon, Monkey, Marmoset, Mouse, Rat (100%), Galago, Panda, Dog, Bovine, Bat, Horse, Pig (92%), Rabbit, Opossum (85%). Type of Immunogen: Synthetic peptide
Isotype:	IgG
Specificity:	Human MAK
Predicted Reactivity:	Percent identity by BLAST analysis: Human, Mouse, Rat (100%) Dog, Bovine, Horse, Pig (92%) Rabbit (85%).
Purification:	Immunoaffinity purified

Target Details

Target:	MAK
Alternative Name:	MAK (MAK Products)
Background:	Name/Gene ID: MAK Subfamily: MAK Family: Protein Kinase Synonyms: MAK, DJ417M14.2, HMAK, RP62
Gene ID:	4117
NCBI Accession:	NP_005897
UniProt:	P20794

Application Details

Application Notes:	Approved: WB Usage: ELISA titer using peptide based assay: 1:312500. Western Blot: Suggested dilution at 1 µg/mL in 5 % skim milk / PBS buffer, and HRP conjugated anti-Rabbit IgG should be diluted in 1:50000 - 100000 as second antibody.
Comment:	Target Species of Antibody: Human
Restrictions:	For Research Use only

Handling

Format:	Lyophilized
Reconstitution:	Distilled Water.
Concentration:	Lot specific
Buffer:	Lyophilized from PBS with 2 % sucrose
Handling Advice:	Avoid repeat freeze-thaw cycles.
Storage:	4 °C, -20 °C
Storage Comment:	Long term: -20°C, the use of 50% glycerol is recommended if storing aliquots in -20°C for long term use (up to 1 year) Short term (less than 1 week): 4°C. Avoid freeze-thaw cycles.

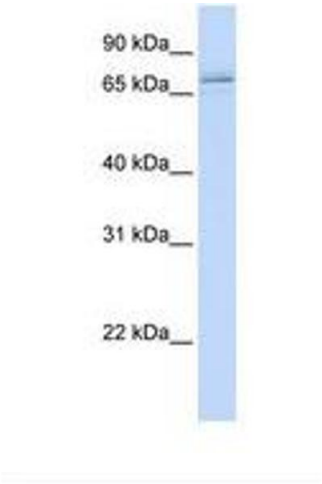


Image 1.