

Datasheet for ABIN6738027
anti-SLC22A7 antibody (AA 72-121)[Go to Product page](#)

1 Image

Overview

| | |
|----------------------|-----------------------|
| Quantity: | 100 µL |
| Target: | SLC22A7 |
| Binding Specificity: | AA 72-121 |
| Reactivity: | Human, Monkey |
| Host: | Rabbit |
| Clonality: | Polyclonal |
| Application: | Western Blotting (WB) |

Product Details

| | |
|-----------------------|---|
| Immunogen: | Synthetic peptide located between aa72-121 of human SLC22A7 (Q9Y694-2, NP_006663). Percent identity by BLAST analysis: Human, Chimpanzee, Orangutan, Gibbon, Marmoset (100%), Gorilla (92%). Type of Immunogen: Synthetic peptide |
| Isotype: | IgG |
| Specificity: | Human SLC22A7 |
| Predicted Reactivity: | Percent identity by BLAST analysis: Human (100%). |
| Purification: | Immunoaffinity purified |

Target Details

| | |
|---------|---------|
| Target: | SLC22A7 |
|---------|---------|

Target Details

| | |
|-------------------|---|
| Alternative Name: | SLC22A7 / OAT2 (SLC22A7 Products) |
| Background: | Name/Gene ID: SLC22A7 Subfamily: Organic anion transporter Family: Transporter Synonyms: SLC22A7, HOAT2, Liver-specific transporter, OAT2, Organic anion transporter 2, NLT, Novel liver transporter |
| Gene ID: | 10864 |
| NCBI Accession: | NP_006663 |
| UniProt: | Q9Y694 |

Application Details

| | |
|--------------------|--|
| Application Notes: | Approved: WB Usage: ELISA titer using peptide based assay: 1:62500. Western Blot: Suggested dilution at 1 µg/mL in 5 % skim milk / PBS buffer, and HRP conjugated anti-Rabbit IgG should be diluted in 1:50000 - 100000 as second antibody. |
| Comment: | Target Species of Antibody: Human |
| Restrictions: | For Research Use only |

Handling

| | |
|------------------|---|
| Format: | Lyophilized |
| Reconstitution: | Distilled Water. |
| Concentration: | Lot specific |
| Buffer: | Lyophilized from PBS with 2 % sucrose |
| Handling Advice: | Avoid repeat freeze-thaw cycles. |
| Storage: | 4 °C, -20 °C |
| Storage Comment: | Long term: -20°C, the use of 50% glycerol is recommended if storing aliquots in -20°C for long term use (up to 1 year) Short term (less than 1 week): 4°C. Avoid freeze-thaw cycles. |

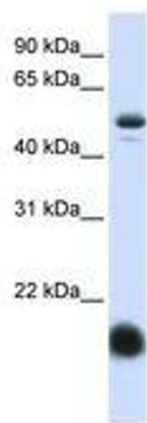


Image 1.