



[Go to Product page](#)

Datasheet for ABIN6738034  
**anti-COBLL1 antibody (AA 256-305)**

2 Images

Overview

Quantity:	100 µL
Target:	COBLL1
Binding Specificity:	AA 256-305
Reactivity:	Human, Dog, Rabbit, Mouse, Cow, Guinea Pig, Horse, Bat, Monkey, Pig
Host:	Rabbit
Clonality:	Polyclonal
Conjugate:	This COBLL1 antibody is un-conjugated
Application:	Western Blotting (WB), Immunohistochemistry (IHC), Immunohistochemistry (Paraffin-embedded Sections) (IHC (p))

Product Details

Immunogen:	Synthetic peptide located between aa256-305 of human COBLL1 (A6NMZ3, NP_055715). Percent identity by BLAST analysis: Human, Chimpanzee, Gorilla, Orangutan, Gibbon, Monkey, Galago, Marmoset, Mouse, Elephant, Dog, Bovine, Bat, Rabbit, Horse, Pig, Guinea pig (100%), Platypus (92%), Turkey, Chicken (85%).  Type of Immunogen: Synthetic peptide
Isotype:	IgG
Specificity:	Human COBLL1
Predicted Reactivity:	Percent identity by BLAST analysis: Human, Mouse, Dog, Bovine, Rabbit, Horse, Pig, Guinea pig (100%) Chicken (85%).

## Product Details

---

Purification: Immunoaffinity purified

## Target Details

---

Target: COBLL1

Alternative Name: COBLL1 ([COBLL1 Products](#))

Background: Name/Gene ID: COBLL1

Synonyms: COBLL1, COBL-like 1, COBLR1, Cordon-bleu protein-like 1, KIAA0977

Gene ID: 22837

NCBI Accession: [NP\\_055715](#)

UniProt: [Q53SF7](#)

## Application Details

---

Application Notes: Approved: IHC, IHC-P, WB

Usage: ELISA titer using peptide based assay: 1:312500. Western Blot: Suggested dilution at 0.5 µg/mL in 5 % skim milk / PBS buffer, and HRP conjugated anti-Rabbit IgG should be diluted in 1:50000 - 100000 as second antibody.

Comment: Target Species of Antibody: Human

Restrictions: For Research Use only

## Handling

---

Format: Lyophilized

Reconstitution: Distilled Water.

Concentration: Lot specific

Buffer: Lyophilized from PBS with 2 % sucrose

Handling Advice: Avoid repeat freeze-thaw cycles.

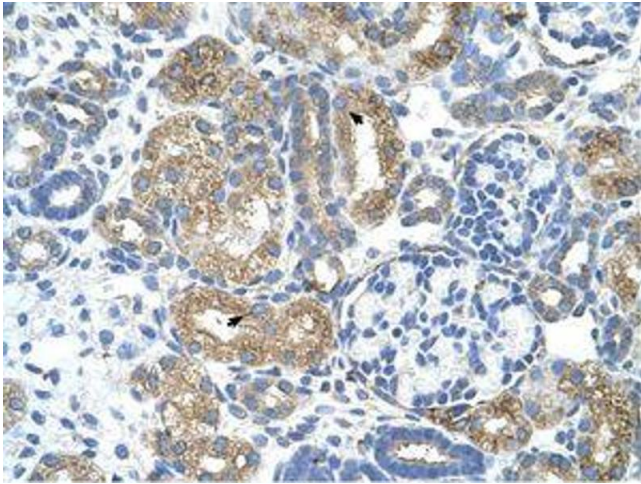
Storage: 4 °C, -20 °C

Storage Comment: Long term: -20°C, the use of 50% glycerol is recommended if storing aliquots in -20°C for long term use (up to 1 year)

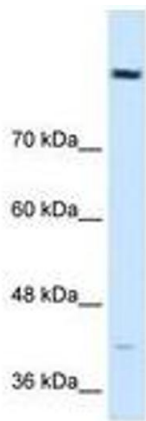
## Handling

Short term (less than 1 week): 4°C. Avoid freeze-thaw cycles.

## Images



**Image 1.**



**Image 2.**