

Datasheet for ABIN6738038  
**anti-PLEKHA4 antibody (AA 218-267)**[Go to Product page](#)

## 1 Image

## Overview

Quantity:	100 µL
Target:	PLEKHA4
Binding Specificity:	AA 218-267
Reactivity:	Human, Mouse, Rat, Horse, Pig, Monkey, Bat
Host:	Rabbit
Clonality:	Polyclonal
Conjugate:	This PLEKHA4 antibody is un-conjugated
Application:	Western Blotting (WB)

## Product Details

Immunogen:	Synthetic peptide located between aa218-267 of human PLEKHA4 (Q9H4M7, NP_065955). Percent identity by BLAST analysis: Human, Chimpanzee, Gorilla, Gibbon, Monkey, Galago, Marmoset, Mouse, Rat, Elephant, Bat, Horse, Pig (100%), Dog, Bovine, Rabbit, Guinea pig (92%).  Type of Immunogen: Synthetic peptide
Isotype:	IgG
Specificity:	Human PLEKHA4
Predicted Reactivity:	Percent identity by BLAST analysis: Human, Mouse, Rat, Horse, Pig (100%) Dog, Bovine, Rabbit, Guinea pig (92%).
Purification:	Immunoaffinity purified

## Target Details

Target:	PLEKHA4
Alternative Name:	PLEKHA4 ( <a href="#">PLEKHA4 Products</a> )
Background:	Name/Gene ID: PLEKHA4  Synonyms: PLEKHA4, PEPP1, PEPP-1
Gene ID:	57664
NCBI Accession:	<a href="#">NP_065955</a>
UniProt:	<a href="#">Q9H4M7</a>

## Application Details

Application Notes:	Approved: WB  Usage: ELISA titer using peptide based assay: 1:312500. Western Blot: Suggested dilution at 1 µg/mL in 5 % skim milk / PBS buffer, and HRP conjugated anti-Rabbit IgG should be diluted in 1:50000 - 100000 as second antibody.
Comment:	Target Species of Antibody: Human
Restrictions:	For Research Use only

## Handling

Format:	Lyophilized
Reconstitution:	Distilled Water.
Concentration:	Lot specific
Buffer:	Lyophilized from PBS with 2 % sucrose
Handling Advice:	Avoid repeat freeze-thaw cycles.
Storage:	4 °C, -20 °C
Storage Comment:	Long term: -20°C, the use of 50% glycerol is recommended if storing aliquots in -20°C for long term use (up to 1 year)  Short term (less than 1 week): 4°C. Avoid freeze-thaw cycles.

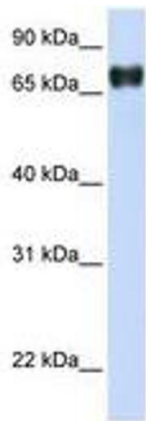


Image 1.