



Datasheet for ABIN6738040
anti-LRRC2 antibody (N-Term)



[Go to Product page](#)

1 Image

Overview

Quantity:	100 µL
Target:	LRRC2
Binding Specificity:	N-Term
Reactivity:	Human
Host:	Rabbit
Clonality:	Polyclonal
Conjugate:	This LRRC2 antibody is un-conjugated
Application:	Western Blotting (WB)

Product Details

Immunogen:	Synthetic peptide from N-Terminus of human LRRC2 (Q9BYS8, NP_078788). Percent identity by BLAST analysis: Human (100%), Gorilla, Orangutan, Gibbon, Monkey, Galago, Marmoset, Mouse, Rat, Panda, Dog, Bovine, Rabbit, Horse, Pig, Guinea pig (92%), Bat, Opossum, Xenopus (85%). Type of Immunogen: Synthetic peptide
Isotype:	IgG
Specificity:	Human LRRC2
Predicted Reactivity:	Percent identity by BLAST analysis: Human (100%) Mouse, Rat, Dog, Bovine, Horse, Pig (92%).
Purification:	Immunoaffinity purified

Target Details

Target:	LRRC2
Alternative Name:	LRRC2 (LRRC2 Products)
Background:	Name/Gene ID: LRRC2 Synonyms: LRRC2
Gene ID:	79442
NCBI Accession:	NP_078788
UniProt:	Q9BYS8

Application Details

Application Notes:	Approved: WB Usage: ELISA titer using peptide based assay: 1:312500. Western Blot: Suggested dilution at 1 µg/mL in 5 % skim milk / PBS buffer, and HRP conjugated anti-Rabbit IgG should be diluted in 1:50000 - 100000 as second antibody.
Comment:	Target Species of Antibody: Human
Restrictions:	For Research Use only

Handling

Format:	Lyophilized
Reconstitution:	Distilled Water.
Concentration:	Lot specific
Buffer:	Lyophilized from PBS with 2 % sucrose
Handling Advice:	Avoid repeat freeze-thaw cycles.
Storage:	4 °C,-20 °C
Storage Comment:	Long term: -20°C, the use of 50% glycerol is recommended if storing aliquots in -20°C for long term use (up to 1 year) Short term (less than 1 week): 4°C. Avoid freeze-thaw cycles.

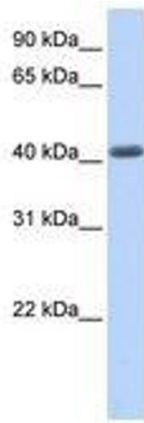


Image 1.