

Datasheet for ABIN6738045
anti-HDAC11 antibody (AA 146-195)[Go to Product page](#)

1 Image

Overview

Quantity:	100 µL
Target:	HDAC11
Binding Specificity:	AA 146-195
Reactivity:	Human, Mouse, Rat, Cow, Dog, Guinea Pig, Horse, Rabbit, Monkey, Bat, Chicken, Pig, Drosophila melanogaster
Host:	Rabbit
Clonality:	Polyclonal
Conjugate:	This HDAC11 antibody is un-conjugated
Application:	Western Blotting (WB)

Product Details

Immunogen:	Synthetic peptide located between aa146-195 of human HDAC11 (Q96DB2, NP_079103). Percent identity by BLAST analysis: Human, Chimpanzee, Gorilla, Gibbon, Monkey, Galago, Marmoset, Mouse, Rat, Elephant, Dog, Bovine, Bat, Rabbit, Horse, Pig, Guinea pig, Turkey, Zebra finch, Chicken, Lizard, Stickleback, Drosophila (100%), Opossum, Rice, Grape, Arabidopsis (92%), Beetle (85%). Type of Immunogen: Synthetic peptide
Isotype:	IgG
Specificity:	Human HDAC11
Predicted Reactivity:	Percent identity by BLAST analysis: Human, Mouse, Rat, Dog, Bovine, Rabbit, Pig, Guinea pig,

Product Details

Chicken (100%).

Purification: Immunoaffinity purified

Target Details

Target: HDAC11

Alternative Name: HDAC11 ([HDAC11 Products](#))

Background: Name/Gene ID: HDAC11
Family: Histone Deacetylase

Synonyms: HDAC11, HD11, Histone deacetylase 11

Gene ID: 79885

NCBI Accession: [NP_079103](#)

UniProt: [Q96DB2](#)

Application Details

Application Notes: Approved: WB

Usage: ELISA titer using peptide based assay: 1:62500. Western Blot: Suggested dilution at 1 µg/mL in 5 % skim milk / PBS buffer, and HRP conjugated anti-Rabbit IgG should be diluted in 1:50000 - 100000 as second antibody.

Comment: Target Species of Antibody: Human

Restrictions: For Research Use only

Handling

Format: Lyophilized

Reconstitution: Distilled Water.

Concentration: Lot specific

Buffer: Lyophilized from PBS with 2 % sucrose

Handling Advice: Avoid repeat freeze-thaw cycles.

Storage: 4 °C, -20 °C

Handling

Storage Comment:	Long term: -20°C, the use of 50% glycerol is recommended if storing aliquots in -20°C for long term use (up to 1 year)
	Short term (less than 1 week): 4°C. Avoid freeze-thaw cycles.

Images

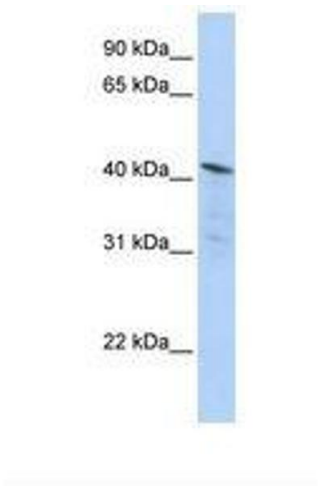


Image 1.