

Datasheet for ABIN6738050  
**anti-TJP2 antibody (C-Term)**[Go to Product page](#)

## 1 Image

## Overview

Quantity:	100 µL
Target:	TJP2
Binding Specificity:	C-Term
Reactivity:	Human, Rat, Dog, Cow, Guinea Pig, Rabbit, Pig, Chicken
Host:	Rabbit
Clonality:	Polyclonal
Conjugate:	This TJP2 antibody is un-conjugated
Application:	Western Blotting (WB)

## Product Details

Immunogen:	Synthetic peptide from C-Terminus of human TJP2 (A2A3H9, NP_963923). Percent identity by BLAST analysis: Human, Chimpanzee, Gorilla, Gibbon, Marmoset, Dog, Bovine, Rabbit, Pig, Guinea pig, Chicken (100%), Monkey, Galago, Mouse, Elephant, Horse, Opossum (92%), Rat (86%), Bat, Zebra finch (85%), Zebrafish (81%).  Type of Immunogen: Synthetic peptide
Isotype:	IgG
Specificity:	Human TJP2 / ZO-2
Predicted Reactivity:	Percent identity by BLAST analysis: Human, Bovine, Rabbit, Pig, Guinea pig (100%) Horse (92%) Rat (86%).
Purification:	Immunoaffinity purified

## Target Details

Target:	TJP2
Alternative Name:	TJP2 / ZO2 / ZO-2 ( <a href="#">TJP2 Products</a> )
Background:	Name/Gene ID: TJP2 Family: Occludin  Synonyms: TJP2, C9DUPq21.11, DUP9q21.11, DFNA51, ZO-2, Zona occludens 2, Zonula occludens protein 2, Tight junction protein 2, Tight junction protein ZO-2, ZO2, X104, Zona occludens protein 2
Gene ID:	9414
NCBI Accession:	<a href="#">NP_963923</a>
UniProt:	<a href="#">Q9UDY2</a>

## Application Details

Application Notes:	Approved: WB  Usage: ELISA titer using peptide based assay: 1:62500. Western Blot: Suggested dilution at 1 µg/mL in 5 % skim milk / PBS buffer, and HRP conjugated anti-Rabbit IgG should be diluted in 1:50000 - 100000 as second antibody.
Comment:	Target Species of Antibody: Human
Restrictions:	For Research Use only

## Handling

Format:	Lyophilized
Reconstitution:	Distilled Water.
Concentration:	Lot specific
Buffer:	Lyophilized from PBS with 2 % sucrose
Handling Advice:	Avoid repeat freeze-thaw cycles.
Storage:	4 °C, -20 °C
Storage Comment:	Long term: -20°C, the use of 50% glycerol is recommended if storing aliquots in -20°C for long term use (up to 1 year)

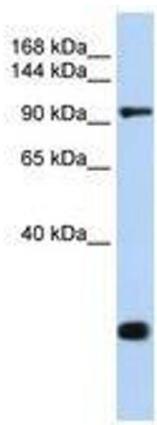
Handling

---

Short term (less than 1 week): 4°C. Avoid freeze-thaw cycles.

Images

---



**Image 1.**