



[Go to Product page](#)

Datasheet for ABIN6738051
anti-PEX10 antibody (C-Term)

1 Image

Overview

Quantity:	100 µL
Target:	PEX10
Binding Specificity:	C-Term
Reactivity:	Human, Monkey
Host:	Rabbit
Clonality:	Polyclonal
Conjugate:	This PEX10 antibody is un-conjugated
Application:	Western Blotting (WB)

Product Details

Immunogen:	Synthetic peptide from C-Terminus of human PEX10 (O60683, NP_002608). Percent identity by BLAST analysis: Human, Chimpanzee, Gorilla, Gibbon, Monkey (100%), Galago, Mouse, Rat, Hamster, Elephant, Dog, Horse, Opossum, Guinea pig, Turkey, Chicken, Platypus (92%), Marmoset, Bat, Xenopus (85%). Type of Immunogen: Synthetic peptide
Isotype:	IgG
Specificity:	Human PEX10
Predicted Reactivity:	Percent identity by BLAST analysis: Human (100%) Mouse, Rat, Dog, Horse, Guinea pig, Chicken (92%).
Purification:	Immunoaffinity purified

Target Details

Target:	PEX10
Alternative Name:	PEX10 (PEX10 Products)
Background:	Name/Gene ID: PEX10 Synonyms: PEX10, NALD, PBD6A, PBD6B, Peroxin 10, Peroxisome assembly protein 10, Peroxin-10, RING finger protein 69, RNF69
Gene ID:	5192
NCBI Accession:	NP_002608
UniProt:	O60683
Pathways:	Monocarboxylic Acid Catabolic Process

Application Details

Application Notes:	Approved: WB Usage: ELISA titer using peptide based assay: 1:1562500. Western Blot: Suggested dilution at 1 µg/mL in 5 % skim milk / PBS buffer, and HRP conjugated anti-Rabbit IgG should be diluted in 1:50000 - 100000 as second antibody.
Comment:	Target Species of Antibody: Human
Restrictions:	For Research Use only

Handling

Format:	Lyophilized
Reconstitution:	Distilled Water.
Concentration:	Lot specific
Buffer:	Lyophilized from PBS with 2 % sucrose
Handling Advice:	Avoid repeat freeze-thaw cycles.
Storage:	4 °C, -20 °C
Storage Comment:	Long term: -20°C, the use of 50% glycerol is recommended if storing aliquots in -20°C for long term use (up to 1 year) Short term (less than 1 week): 4°C. Avoid freeze-thaw cycles.

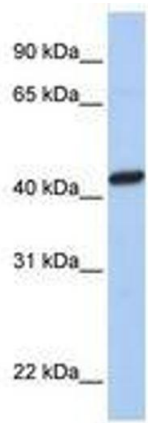


Image 1.