



[Go to Product page](#)

Datasheet for ABIN6738052
anti-UBE2M antibody (N-Term)

1 Image

Overview

Quantity:	100 µL
Target:	UBE2M (ube2m)
Binding Specificity:	N-Term
Reactivity:	Human, Mouse, Rat, Xenopus laevis, Dog, Monkey, Rabbit, Cow, Guinea Pig, Horse
Host:	Rabbit
Clonality:	Polyclonal
Conjugate:	This UBE2M antibody is un-conjugated
Application:	Western Blotting (WB)

Product Details

Immunogen:	Synthetic peptide from N-Terminus of human UBE2M (P61081, NP_003960). Percent identity by BLAST analysis: Human, Chimpanzee, Monkey, Galago, Marmoset, Mouse, Rat, Dog, Bovine, Rabbit, Horse, Guinea pig, Xenopus (100%). Type of Immunogen: Synthetic peptide
Isotype:	IgG
Specificity:	Human UBE2M
Predicted Reactivity:	Percent identity by BLAST analysis: Mouse, Rat, Dog (100%).
Purification:	Immunoaffinity purified

Target Details

Target:	UBE2M (ube2m)
Alternative Name:	UBE2M / UBC12 (ube2m Products)
Background:	Name/Gene ID: UBE2M Synonyms: UBE2M, NEDD8 protein ligase, NEDD8 carrier protein, NEDD8-conjugating enzyme Ubc12, HUbc12, UBC-RS2, UBC12, Ubiquitin-protein ligase M, Yeast UBC12 homolog, Ubiquitin carrier protein M
Gene ID:	9040
NCBI Accession:	NP_003960
UniProt:	P61081

Application Details

Application Notes:	Approved: WB Usage: ELISA titer using peptide based assay: 1:312500. Western Blot: Suggested dilution at 1 µg/mL in 5 % skim milk / PBS buffer, and HRP conjugated anti-Rabbit IgG should be diluted in 1:50000 - 100000 as second antibody.
Comment:	Target Species of Antibody: Human
Restrictions:	For Research Use only

Handling

Format:	Lyophilized
Reconstitution:	Distilled Water.
Concentration:	Lot specific
Buffer:	Lyophilized from PBS with 2 % sucrose
Handling Advice:	Avoid repeat freeze-thaw cycles.
Storage:	4 °C, -20 °C
Storage Comment:	Long term: -20°C, the use of 50% glycerol is recommended if storing aliquots in -20°C for long term use (up to 1 year) Short term (less than 1 week): 4°C. Avoid freeze-thaw cycles.

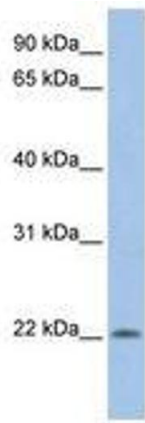


Image 1.