

Datasheet for ABIN6738054
anti-STUB1 antibody (AA 218-267)



[Go to Product page](#)

1 Image

Overview

Quantity:	100 µL
Target:	STUB1
Binding Specificity:	AA 218-267
Reactivity:	Human, Mouse, Rat, Cow, Guinea Pig, Dog, Pig, Horse, Monkey, Chicken, Bat, Xenopus laevis
Host:	Rabbit
Clonality:	Polyclonal
Conjugate:	This STUB1 antibody is un-conjugated
Application:	Western Blotting (WB)

Product Details

Immunogen:	Synthetic peptide located between aa218-267 of human STUB1 (Q9UNE7, NP_005852). Percent identity by BLAST analysis: Human, Chimpanzee, Gorilla, Gibbon, Monkey, Galago, Marmoset, Mouse, Rat, Dog, Bovine, Bat, Horse, Pig, Opossum, Guinea pig, Turkey, Chicken, Xenopus, Stickleback (100%), Elephant, Zebrafish (92%). Type of Immunogen: Synthetic peptide
Isotype:	IgG
Specificity:	Human STUB1
Predicted Reactivity:	Percent identity by BLAST analysis: Rat, Dog, Bovine, Horse, Pig, Chicken (100%) Mouse, Zebrafish (92%).
Purification:	Immunoaffinity purified

Target Details

Target:	STUB1
Alternative Name:	STUB1 / CHIP (STUB1 Products)
Background:	Name/Gene ID: STUB1 Synonyms: STUB1, Antigen NY-CO-7, CHIP, HSPABP2, NY-CO-7, SDCCAG7, UBOX1, CLL-associated antigen KW-8
Gene ID:	10273
NCBI Accession:	NP_005852
UniProt:	Q9UNE7
Pathways:	Regulation of Hormone Metabolic Process , Response to Water Deprivation

Application Details

Application Notes:	Approved: WB Usage: ELISA titer using peptide based assay: 1:312500. Western Blot: Suggested dilution at 1 µg/mL in 5 % skim milk / PBS buffer, and HRP conjugated anti-Rabbit IgG should be diluted in 1:50000 - 100000 as second antibody.
Comment:	Target Species of Antibody: Human
Restrictions:	For Research Use only

Handling

Format:	Lyophilized
Reconstitution:	Distilled Water.
Concentration:	Lot specific
Buffer:	Lyophilized from PBS with 2 % sucrose
Handling Advice:	Avoid repeat freeze-thaw cycles.
Storage:	4 °C, -20 °C
Storage Comment:	Long term: -20°C, the use of 50% glycerol is recommended if storing aliquots in -20°C for long term use (up to 1 year) Short term (less than 1 week): 4°C. Avoid freeze-thaw cycles.

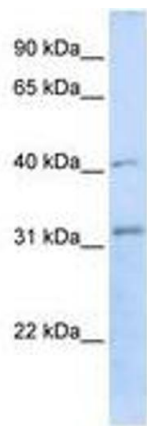


Image 1.