



[Go to Product page](#)

Datasheet for ABIN6738059
anti-FBXO5 antibody (AA 326-375)

1 Image

Overview

Quantity:	100 µL
Target:	FBXO5
Binding Specificity:	AA 326-375
Reactivity:	Human, Dog, Pig
Host:	Rabbit
Clonality:	Polyclonal
Conjugate:	This FBXO5 antibody is un-conjugated
Application:	Western Blotting (WB)

Product Details

Immunogen:	Synthetic peptide located between aa326-375 of human FBXO5 (Q9UKT4, NP_036309). Percent identity by BLAST analysis: Human, Chimpanzee, Gorilla, Gibbon (100%), Monkey, Galago, Rabbit (92%), Elephant (91%), Dog (84%). Type of Immunogen: Synthetic peptide
Isotype:	IgG
Specificity:	Human FBXO5 / EMI1
Predicted Reactivity:	Percent identity by BLAST analysis: Human (100%) Rabbit (92%) Dog (84%).
Purification:	Immunoaffinity purified

Target Details

Target:	FBX05
Alternative Name:	FBX05 / EMI1 (FBX05 Products)
Background:	Name/Gene ID: FBX05 Family: F-Box Synonyms: FBX05, Early mitotic inhibitor 1, F-box protein 5, FBX5, F-box protein Fbx5, EMI1, F-box only protein 5
Gene ID:	26271
NCBI Accession:	NP_036309
UniProt:	Q9UKT4
Pathways:	Mitotic G1-G1/S Phases

Application Details

Application Notes:	Approved: WB Usage: ELISA titer using peptide based assay: 1:1562500. Western Blot: Suggested dilution at 1 µg/mL in 5 % skim milk / PBS buffer, and HRP conjugated anti-Rabbit IgG should be diluted in 1:50000 - 100000 as second antibody.
Comment:	Target Species of Antibody: Human
Restrictions:	For Research Use only

Handling

Format:	Lyophilized
Reconstitution:	Distilled water
Concentration:	Lot specific
Buffer:	Lyophilized from PBS with 2 % sucrose
Handling Advice:	Avoid repeat freeze-thaw cycles.
Storage:	4 °C, -20 °C
Storage Comment:	Long term: -20°C, the use of 50% glycerol is recommended if storing aliquots in -20°C for long term use (up to 1 year)

Handling

Short term (less than 1 week): 4°C. Avoid freeze-thaw cycles.

Images

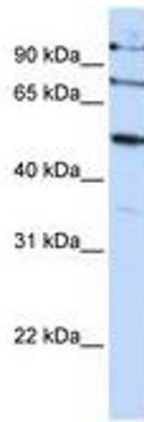


Image 1.