



[Go to Product page](#)

Datasheet for ABIN6738077
anti-PEX10 antibody (AA 201-250)

2 Images

Overview

Quantity:	100 µL
Target:	PEX10
Binding Specificity:	AA 201-250
Reactivity:	Human, Monkey
Host:	Rabbit
Clonality:	Polyclonal
Conjugate:	This PEX10 antibody is un-conjugated
Application:	Western Blotting (WB), Immunohistochemistry (IHC), Immunohistochemistry (Paraffin-embedded Sections) (IHC (p))

Product Details

Immunogen:	Synthetic peptide located between aa201-250 of human PEX10 (O60683-2, NP_722540). Percent identity by BLAST analysis: Human, Gorilla, Monkey (100%), Gibbon (92%). Type of Immunogen: Synthetic peptide
Isotype:	IgG
Specificity:	Human PEX10
Predicted Reactivity:	Percent identity by BLAST analysis: Human (100%).
Purification:	Immunoaffinity purified

Target Details

Target: PEX10

Alternative Name: PEX10 ([PEX10 Products](#))

Background: Name/Gene ID: PEX10

Synonyms: PEX10, NALD, PBD6A, PBD6B, Peroxin 10, Peroxisome assembly protein 10, Peroxin-10, RING finger protein 69, RNF69

Gene ID: 5192

NCBI Accession: [NP_722540](#)

UniProt: [O60683](#)

Pathways: [Monocarboxylic Acid Catabolic Process](#)

Application Details

Application Notes: Approved: IHC, IHC-P, WB

Usage: ELISA titer using peptide based assay: 1:62500. Western Blot: Suggested dilution at 0.25 µg/mL in 5 % skim milk / PBS buffer, and HRP conjugated anti-Rabbit IgG should be diluted in 1:50000 - 100000 as second antibody.

Comment: Target Species of Antibody: Human

Restrictions: For Research Use only

Handling

Format: Lyophilized

Reconstitution: Distilled Water.

Concentration: Lot specific

Buffer: Lyophilized from PBS with 2 % sucrose

Handling Advice: Avoid repeat freeze-thaw cycles.

Storage: 4 °C, -20 °C

Storage Comment: Long term: -20°C, the use of 50% glycerol is recommended if storing aliquots in -20°C for long term use (up to 1 year)

Short term (less than 1 week): 4°C. Avoid freeze-thaw cycles.

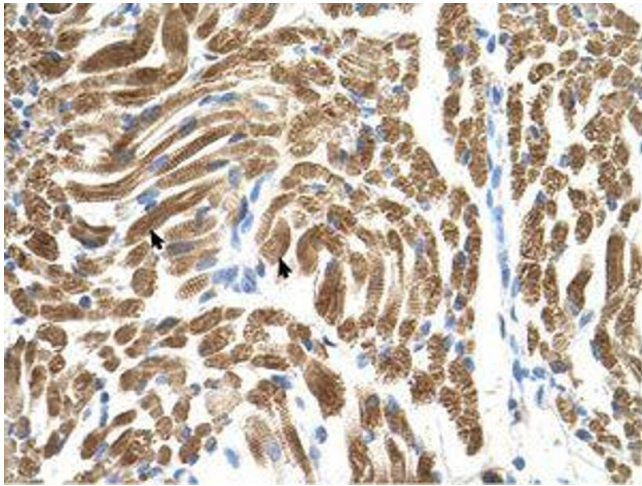


Image 1.

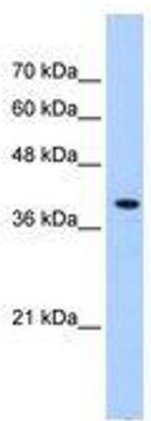


Image 2.