

Datasheet for ABIN6738079  
**anti-STEAP3 antibody (AA 411-460)**[Go to Product page](#)

## 1 Image

## Overview

Quantity:	100 µL
Target:	STEAP3
Binding Specificity:	AA 411-460
Reactivity:	Human, Guinea Pig, Horse, Monkey, Bat
Host:	Rabbit
Clonality:	Polyclonal
Conjugate:	This STEAP3 antibody is un-conjugated
Application:	Western Blotting (WB)

## Product Details

Immunogen:	Synthetic peptide located between aa411-460 of human STEAP3 (A8K6E3, NP_878919). Percent identity by BLAST analysis: Human, Chimpanzee, Gorilla, Gibbon, Monkey, Marmoset, Bat, Horse, Opossum, Guinea pig (100%), Galago, Elephant, Bovine, Rabbit (92%), Mouse, Rat, Hamster, Dog (85%).  Type of Immunogen: Synthetic peptide
Isotype:	IgG
Specificity:	Human STEAP3
Predicted Reactivity:	Percent identity by BLAST analysis: Human, Horse, Guinea pig (100%) Bovine, Rabbit (92%) Mouse, Dog (85%).
Purification:	Immunoaffinity purified

## Target Details

Target:	STEAP3
Alternative Name:	TSAP6 / STEAP3 ( <a href="#">STEAP3 Products</a> )
Background:	Name/Gene ID: STEAP3  Synonyms: STEAP3, Dudulin-2, Dudlin 2, Dudlin-2, Dudulin 2, Metalloreductase STEAP3, HTSAP6, PHyde, Tumor suppressor pH yde, TSAP6, H pH yde, STMP3
Gene ID:	55240
NCBI Accession:	<a href="#">NP_878919</a>
UniProt:	<a href="#">Q658P3</a>
Pathways:	<a href="#">Transition Metal Ion Homeostasis</a>

## Application Details

Application Notes:	Approved: WB  Usage: ELISA titer using peptide based assay: 1:312500. Western Blot: Suggested dilution at 0.25 µg/mL in 5 % skim milk / PBS buffer, and HRP conjugated anti-Rabbit IgG should be diluted in 1:50000 - 100000 as second antibody.
Comment:	Target Species of Antibody: Human
Restrictions:	For Research Use only

## Handling

Format:	Lyophilized
Reconstitution:	Distilled Water.
Concentration:	Lot specific
Buffer:	Lyophilized from PBS with 2 % sucrose
Handling Advice:	Avoid repeat freeze-thaw cycles.
Storage:	4 °C, -20 °C
Storage Comment:	Long term: -20°C, the use of 50% glycerol is recommended if storing aliquots in -20°C for long term use (up to 1 year)  Short term (less than 1 week): 4°C. Avoid freeze-thaw cycles.

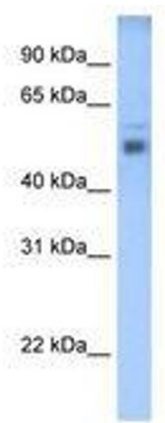


Image 1.