

Datasheet for ABIN6738082
anti-GCDH antibody (AA 146-195)[Go to Product page](#)

1 Image

Overview

Quantity:	100 µL
Target:	GCDH
Binding Specificity:	AA 146-195
Reactivity:	Human, Mouse, Rat, Zebrafish (Danio rerio), Rabbit, Guinea Pig, Monkey
Host:	Rabbit
Clonality:	Polyclonal
Conjugate:	This GCDH antibody is un-conjugated
Application:	Western Blotting (WB)

Product Details

Immunogen:	Synthetic peptide located between aa146-195 of human GCDH (Q92947, NP_000150). Percent identity by BLAST analysis: Human, Gorilla, Orangutan, Gibbon, Monkey, Galago, Marmoset, Mouse, Rat, Elephant, Rabbit, Guinea pig (100%), Bovine, Horse, Pig, Lizard, Xenopus (92%), Opossum, Platypus, Zebrafish (84%), Drosophila (83%). Type of Immunogen: Synthetic peptide
Isotype:	IgG
Specificity:	Human GCDH
Predicted Reactivity:	Percent identity by BLAST analysis: Human, Mouse, Rat, Rabbit, Guinea pig (100%) Bovine, Horse (92%) Pig (85%) Xenopus, Zebrafish (84%).
Purification:	Immunoaffinity purified

Target Details

Target:	GCDH
Alternative Name:	GCD / GCDH (GCDH Products)
Background:	Name/Gene ID: GCDH Synonyms: GCDH, ACAD5, Glutaryl-CoA dehydrogenase, GCD
Gene ID:	2639
NCBI Accession:	NP_000150
UniProt:	Q92947

Application Details

Application Notes:	Approved: WB Usage: ELISA titer using peptide based assay: 1:312500. Western Blot: Suggested dilution at 1 µg/mL in 5 % skim milk / PBS buffer, and HRP conjugated anti-Rabbit IgG should be diluted in 1:50000 - 100000 as second antibody.
Comment:	Target Species of Antibody: Human
Restrictions:	For Research Use only

Handling

Format:	Lyophilized
Reconstitution:	Distilled Water.
Concentration:	Lot specific
Buffer:	Lyophilized from PBS with 2 % sucrose
Handling Advice:	Avoid repeat freeze-thaw cycles.
Storage:	4 °C, -20 °C
Storage Comment:	Long term: -20°C, the use of 50% glycerol is recommended if storing aliquots in -20°C for long term use (up to 1 year) Short term (less than 1 week): 4°C. Avoid freeze-thaw cycles.

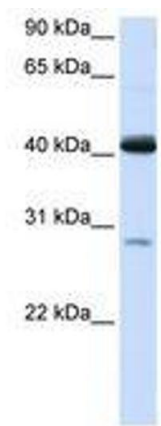


Image 1.