

Datasheet for ABIN6738091  
**anti-ABCB9 antibody (N-Term)**



[Go to Product page](#)

1 Image

Overview

Quantity:	100 µL
Target:	ABCB9
Binding Specificity:	N-Term
Reactivity:	Human, Mouse, Rat, Cow, Dog, Monkey, Bat, Hamster
Host:	Rabbit
Clonality:	Polyclonal
Conjugate:	This ABCB9 antibody is un-conjugated
Application:	Western Blotting (WB)

Product Details

Immunogen:	Synthetic peptide from N-Terminus of human ABCB9 (Q9NP78, NP_062570). Percent identity by BLAST analysis: Human, Chimpanzee, Gorilla, Monkey, Galago, Marmoset, Mouse, Rat, Hamster, Dog, Bovine, Bat (100%), Elephant, Rabbit, Pig (92%).  Type of Immunogen: Synthetic peptide
Isotype:	IgG
Specificity:	Human ABCB9
Predicted Reactivity:	Percent identity by BLAST analysis: Human, Mouse, Rat, Dog, Bovine (100%) Rabbit, Pig (92%).
Purification:	Immunoaffinity purified

## Target Details

---

Target:	ABCB9
Alternative Name:	ABCB9 ( <a href="#">ABCB9 Products</a> )
Background:	Name/Gene ID: ABCB9 Subfamily: ATP-binding cassette - ABCB/MDR Family: Transporter  Synonyms: ABCB9, ABC transporter 9 protein, EST122234, HABCB9, TAP-like ABC transporter, TAPL, KIAA1520, TAP-like protein
Gene ID:	23457
NCBI Accession:	<a href="#">NP_062570</a>
UniProt:	<a href="#">Q9NP78</a>
Pathways:	<a href="#">Regulation of Leukocyte Mediated Immunity, Positive Regulation of Immune Effector Process</a>

## Application Details

---

Application Notes:	Approved: WB  Usage: ELISA titer using peptide based assay: 1:1562500. Western Blot: Suggested dilution at 1 µg/mL in 5 % skim milk / PBS buffer, and HRP conjugated anti-Rabbit IgG should be diluted in 1:50000 - 100000 as second antibody.
Comment:	Target Species of Antibody: Human
Restrictions:	For Research Use only

## Handling

---

Format:	Lyophilized
Reconstitution:	Distilled Water.
Concentration:	Lot specific
Buffer:	Lyophilized from PBS with 2 % sucrose
Handling Advice:	Avoid repeat freeze-thaw cycles.
Storage:	4 °C,-20 °C
Storage Comment:	Long term: -20°C, the use of 50% glycerol is recommended if storing aliquots in -20°C for long

## Handling

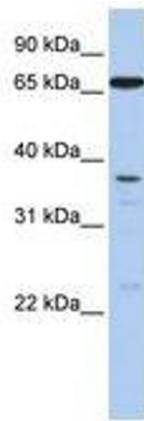
---

term use (up to 1 year)

Short term (less than 1 week): 4°C. Avoid freeze-thaw cycles.

## Images

---



**Image 1.**