

Datasheet for ABIN6738092

## anti-SLC25A20 antibody (AA 216-265)



[Go to Product page](#)

### 1 Image

#### Overview

Quantity:	100 µL
Target:	SLC25A20
Binding Specificity:	AA 216-265
Reactivity:	Mouse, Human, Rat, Cow, Sheep, Dog, Guinea Pig, Horse, Rabbit, Hamster, Monkey, Bat, Chicken, Pig
Host:	Rabbit
Clonality:	Polyclonal
Conjugate:	This SLC25A20 antibody is un-conjugated
Application:	Western Blotting (WB)

#### Product Details

Immunogen:	<p>Synthetic peptide located between aa216-265 of human SLC25A20 (P97521, NP_000378).</p> <p>Percent identity by BLAST analysis: Human, Chimpanzee, Gorilla, Orangutan, Gibbon, Monkey, Galago, Marmoset, Mouse, Rat, Sheep, Hamster, Elephant, Dog, Bovine, Bat, Rabbit, Horse, Pig, Opossum, Guinea pig, Turkey, Chicken, Lizard (100%), Zebra finch, Platypus, Xenopus, Salmon, Smelt, Stickleback, Zebrafish (92%).</p> <p>Type of Immunogen: Synthetic peptide</p>
Isotype:	IgG
Specificity:	Human SLC25A20
Predicted Reactivity:	Percent identity by BLAST analysis: Human, Mouse, Rat, Sheep, Dog, Bovine, Chicken (100%)

## Product Details

Xenopus, Zebrafish (92%).

Purification: Immunoaffinity purified

## Target Details

Target: SLC25A20

Alternative Name: SLC25A20 / CACT ([SLC25A20 Products](#))

Background: Name/Gene ID: SLC25A20  
Subfamily: Mitochondrial carrier  
Family: Transporter

Synonyms: SLC25A20, CACT, CAC

Gene ID: 788

NCBI Accession: [NP\\_000378](#)

UniProt: [O43772](#)

Pathways: [TCR Signaling](#), [Production of Molecular Mediator of Immune Response](#), [Maintenance of Protein Location](#), [Toll-Like Receptors Cascades](#)

## Application Details

Application Notes: Approved: WB

Usage: ELISA titer using peptide based assay: 1:312500. Western Blot: Suggested dilution at 1 µg/mL in 5 % skim milk / PBS buffer, and HRP conjugated anti-Rabbit IgG should be diluted in 1:50000 - 100000 as second antibody.

Comment: Target Species of Antibody: Human

Restrictions: For Research Use only

## Handling

Format: Lyophilized

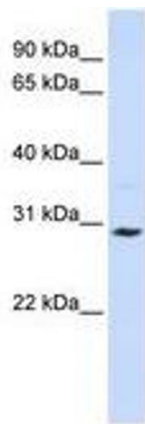
Reconstitution: Distilled Water.

Concentration: Lot specific

## Handling

Buffer:	Lyophilized from PBS with 2 % sucrose
Handling Advice:	Avoid repeat freeze-thaw cycles.
Storage:	4 °C, -20 °C
Storage Comment:	Long term: -20°C, the use of 50% glycerol is recommended if storing aliquots in -20°C for long term use (up to 1 year) Short term (less than 1 week): 4°C. Avoid freeze-thaw cycles.

## Images



**Image 1.**