



Datasheet for ABIN6738093
anti-SLC41A3 antibody (AA 434-483)



[Go to Product page](#)

1 Image

Overview

Quantity:	100 µL
Target:	SLC41A3
Binding Specificity:	AA 434-483
Reactivity:	Human, Cow, Dog, Guinea Pig, Mouse, Rabbit, Rat, Hamster, Monkey, Pig
Host:	Rabbit
Clonality:	Polyclonal
Conjugate:	This SLC41A3 antibody is un-conjugated
Application:	Western Blotting (WB)

Product Details

Immunogen:	Synthetic peptide located between aa434-483 of human SLC41A3 (Q96GZ6, NP_001008485). Percent identity by BLAST analysis: Human, Gorilla, Gibbon, Monkey, Marmoset, Mouse, Rat, Hamster, Elephant, Panda, Dog, Bovine, Rabbit, Pig, Opossum, Guinea pig (100%), Bat, Drosophila, Beetle (92%), Orangutan, Galago, Horse, Turkey, Zebra finch, Chicken, Platypus, Lizard, Xenopus, Seabass, Salmon, Stickleback, Zebrafish (91%). Type of Immunogen: Synthetic peptide
Isotype:	IgG
Specificity:	Human SLC41A3
Predicted Reactivity:	Percent identity by BLAST analysis: Human, Mouse, Dog, Bovine, Rabbit, Pig, Guinea pig (100%) Chicken, Xenopus (91%).

Product Details

Purification: Immunoaffinity purified

Target Details

Target: SLC41A3

Alternative Name: SLC41A3 ([SLC41A3 Products](#))

Background: Name/Gene ID: SLC41A3
Subfamily: Divalent cation transporter
Family: Transporter

Synonyms: SLC41A3, SLC41A1-like 2, SLC41A1-L2

Gene ID: 54946

NCBI Accession: [NP_001008485](#)

UniProt: [Q96GZ6](#)

Application Details

Application Notes: Approved: WB

Usage: ELISA titer using peptide based assay: 1:62500. Western Blot: Suggested dilution at 1 μ g/mL in 5 % skim milk / PBS buffer, and HRP conjugated anti-Rabbit IgG should be diluted in 1:50000 - 100000 as second antibody.

Comment: Target Species of Antibody: Human

Restrictions: For Research Use only

Handling

Format: Lyophilized

Reconstitution: Distilled Water.

Concentration: Lot specific

Buffer: Lyophilized from PBS with 2 % sucrose

Handling Advice: Avoid repeat freeze-thaw cycles.

Storage: 4 °C, -20 °C

Handling

Storage Comment: Long term: -20°C, the use of 50% glycerol is recommended if storing aliquots in -20°C for long term use (up to 1 year)
Short term (less than 1 week): 4°C. Avoid freeze-thaw cycles.

Images

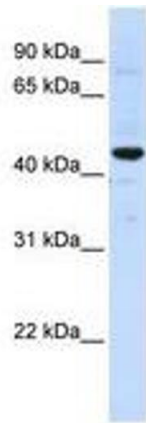


Image 1.