

Datasheet for ABIN6738094
anti-SLC45A2 antibody (AA 326-375)[Go to Product page](#)

1 Image

Overview

Quantity:	100 µL
Target:	SLC45A2
Binding Specificity:	AA 326-375
Reactivity:	Human, Mouse, Rat, Cow
Host:	Rabbit
Clonality:	Polyclonal
Conjugate:	This SLC45A2 antibody is un-conjugated
Application:	Western Blotting (WB)

Product Details

Immunogen:	Synthetic peptide located between aa326-375 of human SLC45A2 (Q6P2P0, NP_001012527). Percent identity by BLAST analysis: Human, Gorilla, Gibbon (100%), Monkey, Galago, Marmoset, Elephant, Dog, Cat, Horse, Pig (92%), Mouse, Rat, Panda, Bovine, Bat, Guinea pig (85%), Platypus (84%). Type of Immunogen: Synthetic peptide
Isotype:	IgG
Specificity:	Human SLC45A2
Predicted Reactivity:	Percent identity by BLAST analysis: Human (100%) Dog, Horse, Pig (92%) Mouse, Rat, Bovine (85%).
Purification:	Immunoaffinity purified

Target Details

Target:	SLC45A2
Alternative Name:	SLC45A2 (SLC45A2 Products)
Background:	Name/Gene ID: SLC45A2 Synonyms: SLC45A2, 1A1, AIM-1, SHEP5, MATP, Protein AIM-1, Underwhite, Melanoma antigen AIM1
Gene ID:	51151
NCBI Accession:	NP_001012527
UniProt:	Q9UMX9

Application Details

Application Notes:	Approved: WB Usage: ELISA titer using peptide based assay: 1:312500. Western Blot: Suggested dilution at 1 µg/mL in 5 % skim milk / PBS buffer, and HRP conjugated anti-Rabbit IgG should be diluted in 1:50000 - 100000 as second antibody.
Comment:	Target Species of Antibody: Human
Restrictions:	For Research Use only

Handling

Format:	Lyophilized
Reconstitution:	Distilled Water.
Concentration:	Lot specific
Buffer:	Lyophilized from PBS with 2 % sucrose
Handling Advice:	Avoid repeat freeze-thaw cycles.
Storage:	4 °C,-20 °C
Storage Comment:	Long term: -20°C, the use of 50% glycerol is recommended if storing aliquots in -20°C for long term use (up to 1 year) Short term (less than 1 week): 4°C. Avoid freeze-thaw cycles.

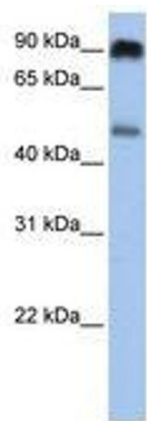


Image 1.