



[Go to Product page](#)

Datasheet for ABIN6738101  
**anti-SLC35A3 antibody (AA 151-200)**

1 Image

Overview

Quantity:	100 µL
Target:	SLC35A3
Binding Specificity:	AA 151-200
Reactivity:	Human, Cow, Horse, Rabbit, Monkey
Host:	Rabbit
Clonality:	Polyclonal
Conjugate:	This SLC35A3 antibody is un-conjugated
Application:	Western Blotting (WB)

Product Details

Immunogen:	Synthetic peptide located between aa151-200 of human SLC35A3 (Q9Y2D2, NP_036375). Percent identity by BLAST analysis: Human, Chimpanzee, Gorilla, Monkey, Rabbit, Horse (100%), Dog (93%), Gibbon (92%), Elephant, Bovine (86%).  Type of Immunogen: Synthetic peptide
Isotype:	IgG
Specificity:	Human SLC35A3
Predicted Reactivity:	Percent identity by BLAST analysis: Human (100%) Rabbit (93%) Bovine (85%).
Purification:	Immunoaffinity purified

## Target Details

---

Target:	SLC35A3
Alternative Name:	SLC35A3 ( <a href="#">SLC35A3 Products</a> )
Background:	Name/Gene ID: SLC35A3 Subfamily: Drug/metabolite transporter Family: Transporter  Synonyms: SLC35A3, Golgi UDP-GlcNAc transporter, UDP-GlcNAc transporter
Gene ID:	23443
NCBI Accession:	<a href="#">NP_036375</a>
UniProt:	<a href="#">Q9Y2D2</a>

## Application Details

---

Application Notes:	Approved: WB  Usage: ELISA titer using peptide based assay: 1:12500. Western Blot: Suggested dilution at 0.5 µg/mL in 5 % skim milk / PBS buffer, and HRP conjugated anti-Rabbit IgG should be diluted in 1:50000 - 100000 as second antibody.
Comment:	Target Species of Antibody: Human
Restrictions:	For Research Use only

## Handling

---

Format:	Lyophilized
Reconstitution:	Distilled Water.
Concentration:	Lot specific
Buffer:	Lyophilized from PBS with 2 % sucrose
Handling Advice:	Avoid repeat freeze-thaw cycles.
Storage:	4 °C,-20 °C
Storage Comment:	Long term: -20°C, the use of 50% glycerol is recommended if storing aliquots in -20°C for long term use (up to 1 year) Short term (less than 1 week): 4°C. Avoid freeze-thaw cycles.

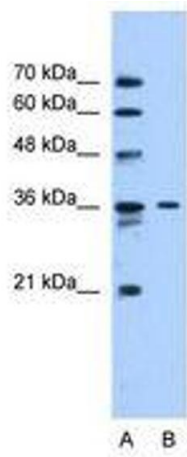


Image 1.