

Datasheet for ABIN6738102  
**anti-SLC2A6 antibody (AA 38-87)**[Go to Product page](#)

## 1 Image

## Overview

Quantity:	100 µL
Target:	SLC2A6
Binding Specificity:	AA 38-87
Reactivity:	Human
Host:	Rabbit
Clonality:	Polyclonal
Conjugate:	This SLC2A6 antibody is un-conjugated
Application:	Western Blotting (WB)

## Product Details

Immunogen:	Synthetic peptide located between aa38-87 of human SLC2A6 (Q9UGQ3, NP_060055). Percent identity by BLAST analysis: Human, Chimpanzee, Gorilla (100%), Gibbon, Monkey, Galago, Marmoset (92%).  Type of Immunogen: Synthetic peptide
Isotype:	IgG
Specificity:	Human SLC2A6 / GLUT9
Predicted Reactivity:	Percent identity by BLAST analysis: Human (100%).
Purification:	Immunoaffinity purified

## Target Details

Target:	SLC2A6
Alternative Name:	SLC2A6 / GLUT9 ( <a href="#">SLC2A6 Products</a> )
Background:	Name/Gene ID: SLC2A6 Subfamily: Sugar transporter Family: Transporter  Synonyms: SLC2A6, Glucose transporter type 6, Glucose transporter type 9, GLUT-9, GLUT9, HSA011372, GLUT-6, GLUT6
Gene ID:	11182
NCBI Accession:	<a href="#">NP_060055</a>
UniProt:	<a href="#">Q9UGQ3</a>

## Application Details

Application Notes:	Approved: WB  Usage: ELISA titer using peptide based assay: 1:312500. Western Blot: Suggested dilution at 1 µg/mL in 5 % skim milk / PBS buffer, and HRP conjugated anti-Rabbit IgG should be diluted in 1:50000 - 100000 as second antibody.
Comment:	Target Species of Antibody: Human
Restrictions:	For Research Use only

## Handling

Format:	Lyophilized
Reconstitution:	Distilled Water.
Concentration:	Lot specific
Buffer:	Lyophilized from PBS with 2 % sucrose
Handling Advice:	Avoid repeat freeze-thaw cycles.
Storage:	4 °C, -20 °C
Storage Comment:	Long term: -20°C, the use of 50% glycerol is recommended if storing aliquots in -20°C for long term use (up to 1 year)

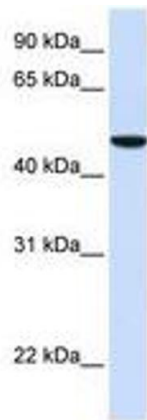
Handling

---

Short term (less than 1 week): 4°C. Avoid freeze-thaw cycles.

Images

---



**Image 1.**