



Datasheet for ABIN6738106  
**anti-SLC45A3 antibody (AA 290-339)**



[Go to Product page](#)

1 Image

Overview

Quantity:	100 µL
Target:	SLC45A3
Binding Specificity:	AA 290-339
Reactivity:	Human, Mouse, Rat, Rabbit, Dog, Guinea Pig, Horse, Bat
Host:	Rabbit
Clonality:	Polyclonal
Conjugate:	This SLC45A3 antibody is un-conjugated
Application:	Western Blotting (WB)

Product Details

Immunogen:	Synthetic peptide located between aa290-339 of human SLC45A3 (Q96JT2, NP_149093). Percent identity by BLAST analysis: Human, Chimpanzee, Gorilla, Gibbon, Marmoset, Mouse, Rat, Panda, Dog, Bat, Rabbit, Horse, Guinea pig (100%), Monkey, Elephant, Bovine, Opossum, Platypus (92%), Galago (85%).  Type of Immunogen: Synthetic peptide
Isotype:	IgG
Specificity:	Human SLC45A3 / Prostein
Predicted Reactivity:	Percent identity by BLAST analysis: Human, Rat, Dog, Rabbit, Horse, Guinea pig (100%) Bovine (92%).
Purification:	Immunoaffinity purified

## Target Details

---

Target:	SLC45A3
Alternative Name:	SLC45A3 / Prostein ( <a href="#">SLC45A3 Products</a> )
Background:	Name/Gene ID: SLC45A3  Synonyms: SLC45A3, PCANAP2, IPCA-2, PCANAP6, Prostein, PRST, IPCA-6, IPCA-8, IPCA6, PCANAP8
Gene ID:	85414
NCBI Accession:	<a href="#">NP_149093</a>
UniProt:	<a href="#">Q96JT2</a>

## Application Details

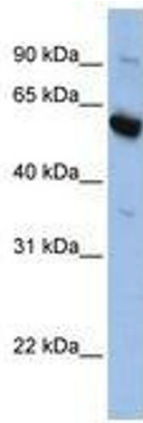
---

Application Notes:	Approved: WB  Usage: ELISA titer using peptide based assay: 1:1562500. Western Blot: Suggested dilution at 1 µg/mL in 5 % skim milk / PBS buffer, and HRP conjugated anti-Rabbit IgG should be diluted in 1:50000 - 100000 as second antibody.
Comment:	Target Species of Antibody: Human
Restrictions:	For Research Use only

## Handling

---

Format:	Lyophilized
Reconstitution:	Distilled Water.
Concentration:	Lot specific
Buffer:	Lyophilized from PBS with 2 % sucrose
Handling Advice:	Avoid repeat freeze-thaw cycles.
Storage:	4 °C,-20 °C
Storage Comment:	Long term: -20°C, the use of 50% glycerol is recommended if storing aliquots in -20°C for long term use (up to 1 year)  Short term (less than 1 week): 4°C. Avoid freeze-thaw cycles.



**Image 1.**