

Datasheet for ABIN6738114
anti-C8B antibody (AA 321-370)[Go to Product page](#)

2 Images

Overview

Quantity:	100 µL
Target:	C8B
Binding Specificity:	AA 321-370
Reactivity:	Human, Dog, Cow, Horse, Monkey, Bat
Host:	Rabbit
Clonality:	Polyclonal
Conjugate:	This C8B antibody is un-conjugated
Application:	Western Blotting (WB), Immunohistochemistry (IHC), Immunohistochemistry (Paraffin-embedded Sections) (IHC (p))

Product Details

Immunogen:	Synthetic peptide located between aa321-370 of human C8B (P07358, NP_000057). Percent identity by BLAST analysis: Human, Gorilla, Gibbon, Monkey, Galago, Marmoset, Dog, Bovine, Bat, Horse (100%), Mouse, Rat, Rabbit, Pig, Guinea pig (92%), Elephant, Turkey, Chicken, Lizard, Xenopus, Trout, Stickleback (85%). Type of Immunogen: Synthetic peptide
Isotype:	IgG
Specificity:	Human C8B
Predicted Reactivity:	Percent identity by BLAST analysis: Human, Dog, Bovine, Horse (100%) Mouse, Rat, Pig, Guinea pig (92%) Chicken (85%).

Product Details

Purification: Immunoaffinity purified

Target Details

Target: C8B

Alternative Name: Complement C8B ([C8B Products](#))

Background: Name/Gene ID: C8B
Subfamily: Complement Component

Synonyms: C8B, Complement C8B

Gene ID: 732

NCBI Accession: [NP_000057](#)

UniProt: [P07358](#)

Pathways: [Complement System](#)

Application Details

Application Notes: Approved: IHC, IHC-P, WB

Usage: ELISA titer using peptide based assay: 1:312500. Western Blot: Suggested dilution at 0.5 µg/mL in 5 % skim milk / PBS buffer, and HRP conjugated anti-Rabbit IgG should be diluted in 1:50000 - 100000 as second antibody.

Comment: Target Species of Antibody: Human

Restrictions: For Research Use only

Handling

Format: Lyophilized

Reconstitution: Distilled Water.

Concentration: Lot specific

Buffer: Lyophilized from PBS with 2 % sucrose

Handling Advice: Avoid repeat freeze-thaw cycles.

Storage: 4 °C, -20 °C

Handling

Storage Comment: Long term: -20°C, the use of 50% glycerol is recommended if storing aliquots in -20°C for long term use (up to 1 year)

Short term (less than 1 week): 4°C. Avoid freeze-thaw cycles.

Images

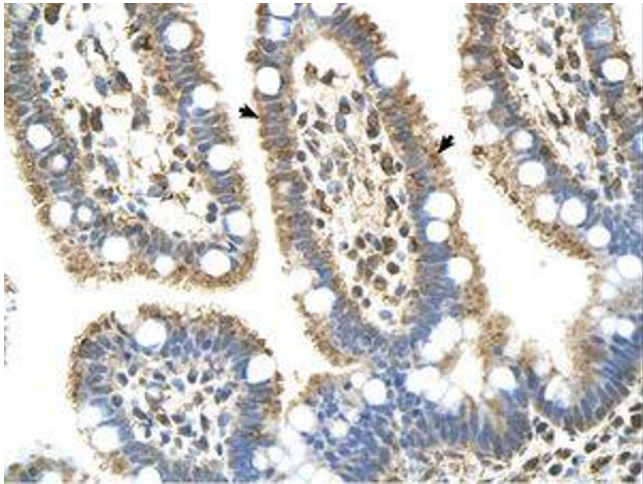


Image 1.

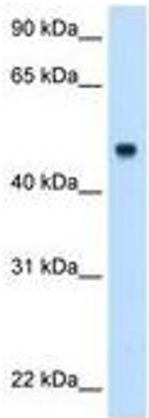


Image 2.