



[Go to Product page](#)

Datasheet for ABIN6738130  
**anti-PLD3 antibody (AA 38-87)**

1 Image

Overview

Quantity:	100 µL
Target:	PLD3
Binding Specificity:	AA 38-87
Reactivity:	Human, Mouse, Cow, Dog, Rabbit, Guinea Pig, Horse, Monkey, Pig, Hamster
Host:	Rabbit
Clonality:	Polyclonal
Conjugate:	This PLD3 antibody is un-conjugated
Application:	Western Blotting (WB)

Product Details

Immunogen:	Synthetic peptide located between aa38-87 of human PLD3 (Q8IV08, NP_001026866). Percent identity by BLAST analysis: Human, Chimpanzee, Gorilla, Orangutan, Gibbon, Monkey, Galago, Marmoset, Mouse, Hamster, Elephant, Panda, Dog, Bovine, Rabbit, Horse, Pig, Guinea pig (100%), Rat (92%).  Type of Immunogen: Synthetic peptide
Isotype:	IgG
Specificity:	Human PLD3
Predicted Reactivity:	Percent identity by BLAST analysis: Human, Mouse, Dog, Bovine, Horse (100%) Rat (92%).
Purification:	Immunoaffinity purified

## Target Details

---

Target:	PLD3
Alternative Name:	PLD3 / Phospholipase D3 ( <a href="#">PLD3 Products</a> )
Background:	Name/Gene ID: PLD3  Synonyms: PLD3, HindIII K4L homolog, HU-K4, HuK4, PLD 3, Choline phosphatase 3, Phospholipase D3
Gene ID:	23646
NCBI Accession:	<a href="#">NP_001026866</a>
UniProt:	<a href="#">Q8IV08</a>
Pathways:	<a href="#">SARS-CoV-2 Protein Interactome</a>

## Application Details

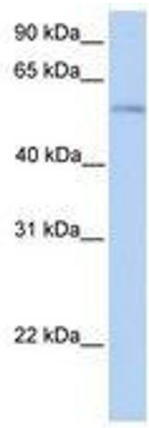
---

Application Notes:	Approved: WB  Usage: ELISA titer using peptide based assay: 1:62500. Western Blot: Suggested dilution at 1 µg/mL in 5 % skim milk / PBS buffer, and HRP conjugated anti-Rabbit IgG should be diluted in 1:50000 - 100000 as second antibody.
Comment:	Target Species of Antibody: Human
Restrictions:	For Research Use only

## Handling

---

Format:	Lyophilized
Reconstitution:	Distilled Water.
Concentration:	Lot specific
Buffer:	Lyophilized from PBS with 2 % sucrose
Handling Advice:	Avoid repeat freeze-thaw cycles.
Storage:	4 °C, -20 °C
Storage Comment:	Long term: -20°C, the use of 50% glycerol is recommended if storing aliquots in -20°C for long term use (up to 1 year)  Short term (less than 1 week): 4°C. Avoid freeze-thaw cycles.



**Image 1.**