



Datasheet for ABIN6738137
anti-CLDND1 antibody (AA 110-159)



[Go to Product page](#)

1 Image

Overview

Quantity:	100 µL
Target:	CLDND1
Binding Specificity:	AA 110-159
Reactivity:	Human, Mouse, Rat, Dog, Horse, Pig, Rabbit, Monkey
Host:	Rabbit
Clonality:	Polyclonal
Conjugate:	This CLDND1 antibody is un-conjugated
Application:	Western Blotting (WB)

Product Details

Immunogen:	Synthetic peptide located between aa110-159 of human CLDND1 (Q9NY35, NP_001035271). Percent identity by BLAST analysis: Human, Chimpanzee, Gorilla, Orangutan, Gibbon, Monkey, Galago, Marmoset, Mouse, Rat, Elephant, Dog, Rabbit, Horse, Pig (100%), Bovine, Guinea pig (92%), Bat, Opossum (85%). Type of Immunogen: Synthetic peptide
Isotype:	IgG
Specificity:	Human CLDND1
Predicted Reactivity:	Percent identity by BLAST analysis: Human, Rat, Dog, Rabbit, Horse, Pig (100%) Bovine, Guinea pig (92%).
Purification:	Immunoaffinity purified

Target Details

Target:	CLDND1
Alternative Name:	CLDND1 (CLDND1 Products)
Background:	Name/Gene ID: CLDND1 Synonyms: CLDND1, C3orf4, Claudin domain containing 1, GENX-3745, Membrane protein GENX-3745
Gene ID:	56650
NCBI Accession:	NP_001035271
UniProt:	Q9NY35

Application Details

Application Notes:	Approved: WB Usage: ELISA titer using peptide based assay: 1:312500. Western Blot: Suggested dilution at 1 μ g/mL in 5 % skim milk / PBS buffer, and HRP conjugated anti-Rabbit IgG should be diluted in 1:50000 - 100000 as second antibody.
Comment:	Target Species of Antibody: Human
Restrictions:	For Research Use only

Handling

Format:	Lyophilized
Reconstitution:	Distilled Water.
Concentration:	Lot specific
Buffer:	Lyophilized from PBS with 2 % sucrose
Handling Advice:	Avoid repeat freeze-thaw cycles.
Storage:	4 °C,-20 °C
Storage Comment:	Long term: -20°C, the use of 50% glycerol is recommended if storing aliquots in -20°C for long term use (up to 1 year) Short term (less than 1 week): 4°C. Avoid freeze-thaw cycles.

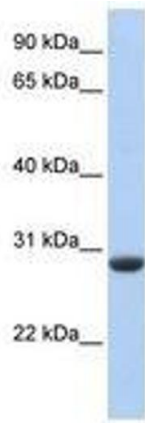


Image 1.