

Datasheet for ABIN6738147  
**anti-GNS antibody (AA 398-447)**[Go to Product page](#)

## 1 Image

## Overview

Quantity:	100 µL
Target:	GNS
Binding Specificity:	AA 398-447
Reactivity:	Human, Mouse, Rat, Cow, Goat, Guinea Pig, Horse, Rabbit, Zebrafish (Danio rerio), Bat, Monkey
Host:	Rabbit
Clonality:	Polyclonal
Conjugate:	This GNS antibody is un-conjugated
Application:	Western Blotting (WB)

## Product Details

Immunogen:	Synthetic peptide located between aa398-447 of human GNS (P15586, NP_002067). Percent identity by BLAST analysis: Human, Chimpanzee, Gorilla, Gibbon, Monkey, Galago, Marmoset, Mouse, Rat, Goat, Panda, Bovine, Bat, Rabbit, Horse, Guinea pig (100%), Dog (92%), Elephant, Lizard (85%), Zebrafish (84%).  Type of Immunogen: Synthetic peptide
Isotype:	IgG
Specificity:	Human GNS
Predicted Reactivity:	Percent identity by BLAST analysis: Human, Mouse, Rat, Bovine, Goat, Rabbit, Horse (100%) Dog (92%) Zebrafish (84%).
Purification:	Immunoaffinity purified

## Target Details

Target:	GNS
Alternative Name:	GNS ( <a href="#">GNS Products</a> )
Background:	Name/Gene ID: GNS  Synonyms: GNS, Glucosamine-6-sulfatase, G6S
Gene ID:	2799
NCBI Accession:	<a href="#">NP_002067</a>
UniProt:	<a href="#">P15586</a>
Pathways:	<a href="#">Glycosaminoglycan Metabolic Process</a>

## Application Details

Application Notes:	Approved: WB  Usage: ELISA titer using peptide based assay: 1:312500. Western Blot: Suggested dilution at 1 µg/mL in 5 % skim milk / PBS buffer, and HRP conjugated anti-Rabbit IgG should be diluted in 1:50000 - 100000 as second antibody.
Comment:	Target Species of Antibody: Human
Restrictions:	For Research Use only

## Handling

Format:	Lyophilized
Reconstitution:	Distilled Water.
Concentration:	Lot specific
Buffer:	Lyophilized from PBS with 2 % sucrose
Handling Advice:	Avoid repeat freeze-thaw cycles.
Storage:	4 °C,-20 °C
Storage Comment:	Long term: -20°C, the use of 50% glycerol is recommended if storing aliquots in -20°C for long term use (up to 1 year)  Short term (less than 1 week): 4°C. Avoid freeze-thaw cycles.

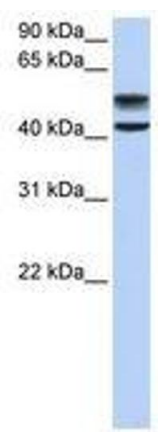


Image 1.