

Datasheet for ABIN6738160
anti-PTPN1 antibody (AA 201-250)



[Go to Product page](#)

1 Image

Overview

Quantity:	100 µL
Target:	PTPN1
Binding Specificity:	AA 201-250
Reactivity:	Human, Mouse, Rat, Monkey, Dog, Pig, Horse, Cow, Guinea Pig, Bat
Host:	Rabbit
Clonality:	Polyclonal
Conjugate:	This PTPN1 antibody is un-conjugated
Application:	Western Blotting (WB)

Product Details

Immunogen:	Synthetic peptide located between aa201-250 of human PTPN1 (P18031, NP_002818). Percent identity by BLAST analysis: Human, Chimpanzee, Gorilla, Orangutan, Monkey, Galago, Marmoset, Mouse, Rat, Elephant, Dog, Bovine, Bat, Horse, Pig, Guinea pig (100%), Rabbit, Xenopus (92%), Opossum, Turkey, Zebra finch, Chicken, Platypus (85%). Type of Immunogen: Synthetic peptide
Isotype:	IgG
Specificity:	Human PTPN1 / PTP1B
Predicted Reactivity:	Percent identity by BLAST analysis: Human, Mouse, Rat, Dog, Bovine, Horse, Pig, Guinea pig (100%) Rabbit (92%) Chicken, Xenopus (85%).
Purification:	Immunoaffinity purified

Target Details

Target:	PTPN1
Alternative Name:	PTP1B (PTPN1 Products)
Background:	Name/Gene ID: PTPN1 Subfamily: NT1 Family: Protein Phosphatase Synonyms: PTPN1, PTP1B, PTP-1B, PTPase 1B
Gene ID:	5770
NCBI Accession:	NP_002818
UniProt:	P18031
Pathways:	TLR Signaling , Response to Growth Hormone Stimulus , ER-Nucleus Signaling , Platelet-derived growth Factor Receptor Signaling

Application Details

Application Notes:	Approved: WB Usage: ELISA titer using peptide based assay: 1:62500. Western Blot: Suggested dilution at 0.5 µg/mL in 5 % skim milk / PBS buffer, and HRP conjugated anti-Rabbit IgG should be diluted in 1:50000 - 100000 as second antibody.
Comment:	Target Species of Antibody: Human
Restrictions:	For Research Use only

Handling

Format:	Lyophilized
Reconstitution:	Distilled Water.
Concentration:	Lot specific
Buffer:	Lyophilized from PBS with 2 % sucrose
Handling Advice:	Avoid repeat freeze-thaw cycles.
Storage:	4 °C,-20 °C
Storage Comment:	Long term: -20°C, the use of 50% glycerol is recommended if storing aliquots in -20°C for long

Handling

term use (up to 1 year)

Short term (less than 1 week): 4°C. Avoid freeze-thaw cycles.

Images

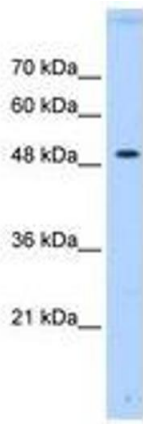


Image 1.